

---

# Tuscola County Parks and Recreation Plan

---

2007-2012



---

January 2007

---

# Tuscola County Parks and Recreation Plan 2007-2012

## Tuscola County Board of Commissioners

- District #1:** Mr. David Milligan
- District #2:** Mr. Thomas Bardwell
- District #3:** Mr. Donald McLane
- District #4:** Mr. Roy Petzold
- District #5:** Mr. Gerald Peterson



**Mr. Michael Hoagland, Tuscola County Controller / Administrator**

## Tuscola County Planning Commission

- Delores Damm
- Zygmunt P. Dworzecki
- Ed Kimbrue
- Keith Kosik
- David Milligan (County Commissioner)
- Richard Peter
- Donald Richards
- Joe Robbins

**The Tuscola County Planning Commission prepared the five-year Recreation Plan with assistance from the following contributors:**

- |                              |  |
|------------------------------|--|
| ⊕ Akron Township             | ⊕ Thumb Area Tourism Council               |
| ⊕ Almer Township             | ⊕ Vassar Township                          |
| ⊕ Arbela Township            | ⊕ Village of Akron                         |
| ⊕ Bay City Wildlife Division | ⊕ Village of Caro                          |
| ⊕ City of Vassar             | ⊕ Village of Cass City                     |
| ⊕ Columbia Township          | ⊕ Village of Fairgrove                     |
| ⊕ Dayton Township            | ⊕ Village of Kingston                      |
| ⊕ Denmark Township           | ⊕ Village of Mayville                      |
| ⊕ Elklund Township           | ⊕ Village of Millington                    |
| ⊕ Ellington Township         | ⊕ Village of Reese                         |
| ⊕ Elmwood Township           | ⊕ Village of Unionville                    |
| ⊕ Fairgrove Township         | ⊕ Watertown Township                       |
| ⊕ Fremont Township           | ⊕ Wells Township                           |
| ⊕ Gilford Township           | ⊕ Wisner Township                          |
| ⊕ Indianfields Township      | ⊕ Michigan Department of Natural Resources |
| ⊕ Juniata Township           | ⊕ Michigan Department of Treasury          |
| ⊕ Kingston Township          | ⊕ U.S. Soil Conservation Service           |
| ⊕ Koylton Township           |  |
| ⊕ Millington Township        |  |
| ⊕ Novesta Township           |  |
| ⊕ Tuscola Township           |  |

# Tuscola County Parks and Recreation Plan 2007-2012 Table of Contents

		Page
<b>I.</b>	<b><i>Introduction</i></b> .....	7
<b>II.</b>	<b><i>Community Description: Social Characteristics</i></b> .....	<b>10</b>
	A. Community Population.....	11
	B. Employment Trends.....	14
	C. Number and Location of Households.....	16
	D. Population Trends.....	18
	E. Population Distribution.....	18
	1. Age.....	18
	2. Gender.....	19
	3. Race.....	19
	4. Income Level.....	20
	F. Location of Population with Unique Needs.....	23
	1. Persons with Disabilities.....	23
	2. Senior Citizens.....	23
<b>III:</b>	<b><i>Community Description: Physical Characteristics</i></b> .....	<b>25</b>
	A. Land Use Patterns.....	26
	B. Topography.....	28
	C. Water Resources.....	28
	D. Fish and Wildlife Resources.....	29
	E. Soils and Vegetation.....	29
	1. Soils.....	29
	2. Vegetation.....	31
	F. Transportation Systems.....	31
	G. Climate.....	31
	H. Environmental Issues.....	31
	I. Zoning.....	32
<b>IV.</b>	<b><i>Administrative Structure</i></b> .....	<b>34</b>
	A. Organization.....	35
	B. Role of the Tuscola County Parks and Recreation Commission.....	36
	C. Partnerships.....	37
	D. Relationship with Other Agencies.....	37
	E. Parks and Recreation Policies and Procedures.....	37
	F. Funding.....	37
	G. 2007 Approved Budget.....	37
<b>V.</b>	<b><i>Description of Planning Process</i></b> .....	<b>39</b>
	A. Plan Development Process.....	40

B.	Key Persons Involved in the Process.....	43
C.	Goals and Objectives.....	43
<b>VI.</b>	<b><i>Recreation Inventory.....</i></b>	<b>46</b>
A.	Tuscola County Recreational Properties / Facilities.....	47
B.	Tuscola County Public School Recreational Properties / Facilities.....	57
C.	Tuscola County Private School Recreations Properties / Facilities.....	61
D.	Tuscola County State of Michigan Recreation Properties / Facilities....	63
E.	Tuscola County Commercial and Other Recreation Properties / Facilities	71
F.	Huron County Recreation Inventory	
1.	City Parks.....	73
2.	County Parks.....	74
3.	State Parks.....	76
G.	Lapeer County Recreation Inventory	
1.	County Parks.....	77
2.	State Parks.....	77
3.	State Game Areas.....	78
H.	Sanilac County Recreation Inventory	
1.	County Parks.....	78
2.	State Game Areas.....	79
I.	Grant Inventory.....	82
<b>VII.</b>	<b><i>Action Plan, Capital Improvement Schedule, and Rationale.....</i></b>	<b>83</b>
A.	Basis for Action Plan.....	84
B.	Action Plan and Capital Improvement Schedule.....	84
<b>VIII.</b>	<b><i>Minutes / Resolutions.....</i></b>	<b>90</b>
<b>IX.</b>	<b><i>Correspondence.....</i></b>	<b>103</b>

## List of Tables

Table 1:	Population Growth in Tuscola and Surrounding Counties.....	12
Table 2:	1990-2000 Population Comparison by Jurisdiction.....	13
Table 3:	1990 to 2000 Population Comparison for Persons Age 65+.....	14
Table 4:	Farm & Non-Farm Employment in Tuscola County.....	14
Table 5:	Non-Farm Occupational Distribution - Tuscola County.....	15
Table 6:	Location of Households.....	16
Table 7:	Preliminary Population Projections.....	18
Table 8:	Age Distribution.....	19
Table 9:	Racial Distributions.....	20
Table 10:	Income Distribution.....	20
Table 11:	Median Household Income.....	21
Table 12:	Disability Among Tuscola County Residents, Ages 21-64.....	23
Table 13:	Disability Among Tuscola County Residents, Ages 65+.....	23
Table 14:	Percent of Persons with Incomes Below Poverty Level in Tuscola County	24
Table 15:	Land Use / Cover in Tuscola County.....	26
Table 16:	Tuscola County - Public Recreational Properties / Facilities.....	47
Table 16a:	Tuscola County - Public School Recreational Properties / Facilities.....	57
Table 16b:	Tuscola County - Private School Recreational Properties / Facilities.....	61
Table 16c:	Tuscola County - State of Michigan Recreational Properties / Facilities..	63
Table 16d:	Commercial and Other Recreational Properties / Facilities.....	71
Table 17:	Huron County Recreation Inventory - City Parks.....	73
Table 17b:	Huron County Recreation Inventory - County Parks.....	74
Table 17c:	Huron County Recreation Inventory - State Parks.....	76
Table 18:	Lapeer County Recreation Inventory - County Parks.....	77
Table 18a:	Lapeer County Recreation Inventory - State Parks.....	77
Table 18b:	Lapeer County Recreational Properties / Facilities: State Game Areas....	78
Table 19:	Sanilac County Recreation Inventory - County Parks.....	78
Table 19a:	Sanilac County Recreational Properties / Facilities: State Game Areas.....	79
Table 20:	Action Plan and Capital Improvement Schedule.....	84

## List of Maps

Cass City State Game Area.....	64
Deford State Game Area.....	65
Fish Point State Wildlife Area.....	66
Fish Point State Wildlife Area (Detailed).....	67
Location Map of Tuscola County.....	9
Murphy Lake State Game Area.....	68
State of Michigan Unemployment Rates Map.....	22
Tuscola County Recreational Opportunities.....	80
Tuscola County Recreation Opportunities Schools.....	81
Tuscola County Soils Map.....	33
Tuscola State Game Area.....	69
Vassar State Game Area.....	70

## Section I

# Introduction



## Introduction

The Tuscola County Parks and Recreation Commission undertook the development of a five-year Master Plan in accordance with the Community Recreation Planning Guidelines (published by the Michigan Department of Natural Resources), for the principal purpose of the following:

1. Promoting the importance of wholesome, quality of life activities for Tuscola County residents, children and adults.
2. Reassessing the current recreational inventory and identifying future recreations needs in Tuscola County.
3. Identifying short-term strategies that would enhance existing parks and recreations leisure-time opportunities for Tuscola County residents.
4. Visualizing long-term strategies that would guide future parks and recreation development in Tuscola County.
5. Developing policies that encourage the formation of local and county partnerships to support parks and recreation opportunities.

A secondary purpose of the Tuscola County Parks and Recreation Commission in preparing a five-year Master Plan was:

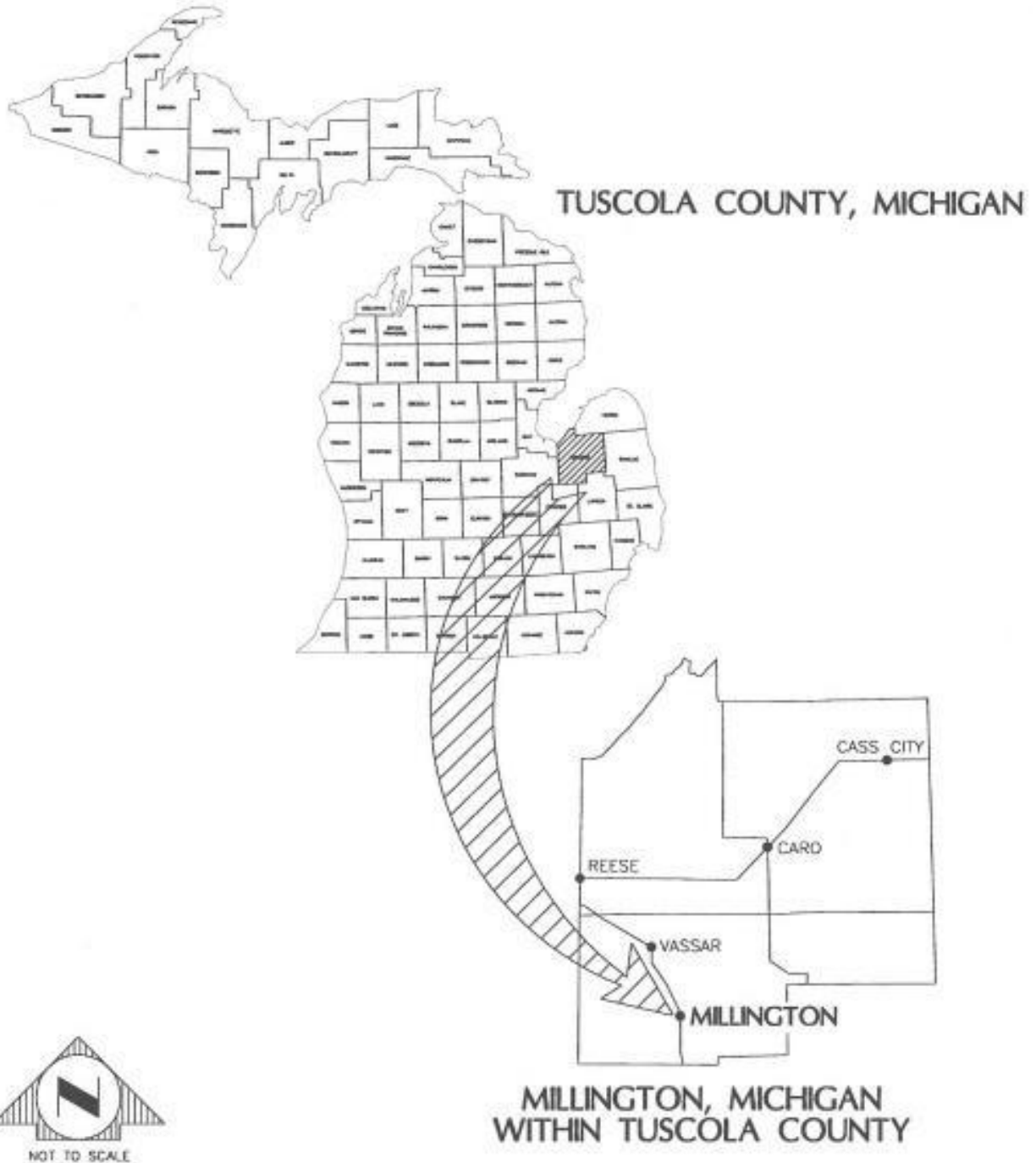
1. To evaluate the current condition of the county-owned park, Vanderbilt County Park and Campground, and recommend improvements as warranted.
2. To increase day usage and overnight camping at Vanderbilt County Park and Campground through effective marketing of Tuscola County and surrounding communities.
3. To develop a long-range plan for constructing an interpretive walkway at Vanderbilt County Park and Campground.

In preparing the Master Plan, the Tuscola County Parks and Recreation Commission provided various forums for local communities, parks and recreation providers, and the general public to comment on perceived recreational needs and recommend potential solutions. The plan represents the Commission's efforts to incorporate the public's requests within the current fiscal parameters of the Tuscola County Board of Commissioners.

In 2006 and 2007, Tuscola County made significant advances toward improving the quality and quantity of recreation opportunities for county residents. Although parks and recreation development in Tuscola County can be categorized as moderate, the potential for multi-community recreation development is considerable. The Master Plan's Action Program identifies these possibilities for quality of life growth and expansion within the county.

# LOCATION MAP

## LOCATION OF TUSCOLA COUNTY IN MICHIGAN



## Section II

# Social Characteristics



## **Community Description:**

### **Social Characteristics**

Located at the base of the “Thumb” area of east central Michigan, Tuscola County offers an optimal environment for nurturing children or enjoying retirement. There is a prevailing quality of cohesiveness, neighborhood, and civility associated with rural communities like Tuscola County. The data and discussions that follow highlight the social characteristics of the county and its populace.

### **Community Population**

Tuscola County’s population increased from 55,498 in 1990 to 58,266 in 2000, a 4.9% increase (Table 1). Many of the communities in Tuscola County experienced a slight increase in population, with some as much as 12.03 %. However, not all communities shared this population increase. Communities in the northwest portion of the county experienced the greatest population losses, decreasing by as much as 2.98%. A comparison of population growth trends for the county and surrounding counties shows that Tuscola County has followed the general pattern of the region, with steady growth from 1930 to 1980, and a loss in population from 1980 to 1990. Tuscola County continued on its path of growth from 1990 to 2000, just as several of the other counties in the region reclaimed their growth in population.

Table 1:  
Population Growth in Tuscola and Surrounding Counties

	1930	1940	1950	1960	1970	1980	1990	2000
<b>Tuscola County</b>	32,934	36,594	38,258	43,305	48,603	56,961	55,948	58,266
<b>Bay County</b>	69,474	74,981	88,461	107,042	117,339	119,881	111,336	107,256
<b>Saginaw County</b>	120,717	130,468	153,515	190,752	219,743	228,059	211,093	202,037
<b>Lapeer County</b>	28,348	32,116	35,794	41,926	53,361	70,038	74,340	91,256
<b>Sanilac County</b>	27,751	30,114	30,837	32,314	35,181	40,789	39,622	44,547
<b>Huron County</b>	31,132	32,584	33,149	34,006	34,083	36,459	34,580	36,079
<b>Genesee County</b>	211,641	227,944	270,963	374,313	445,589	450,449	426,922	438,589

Population Change

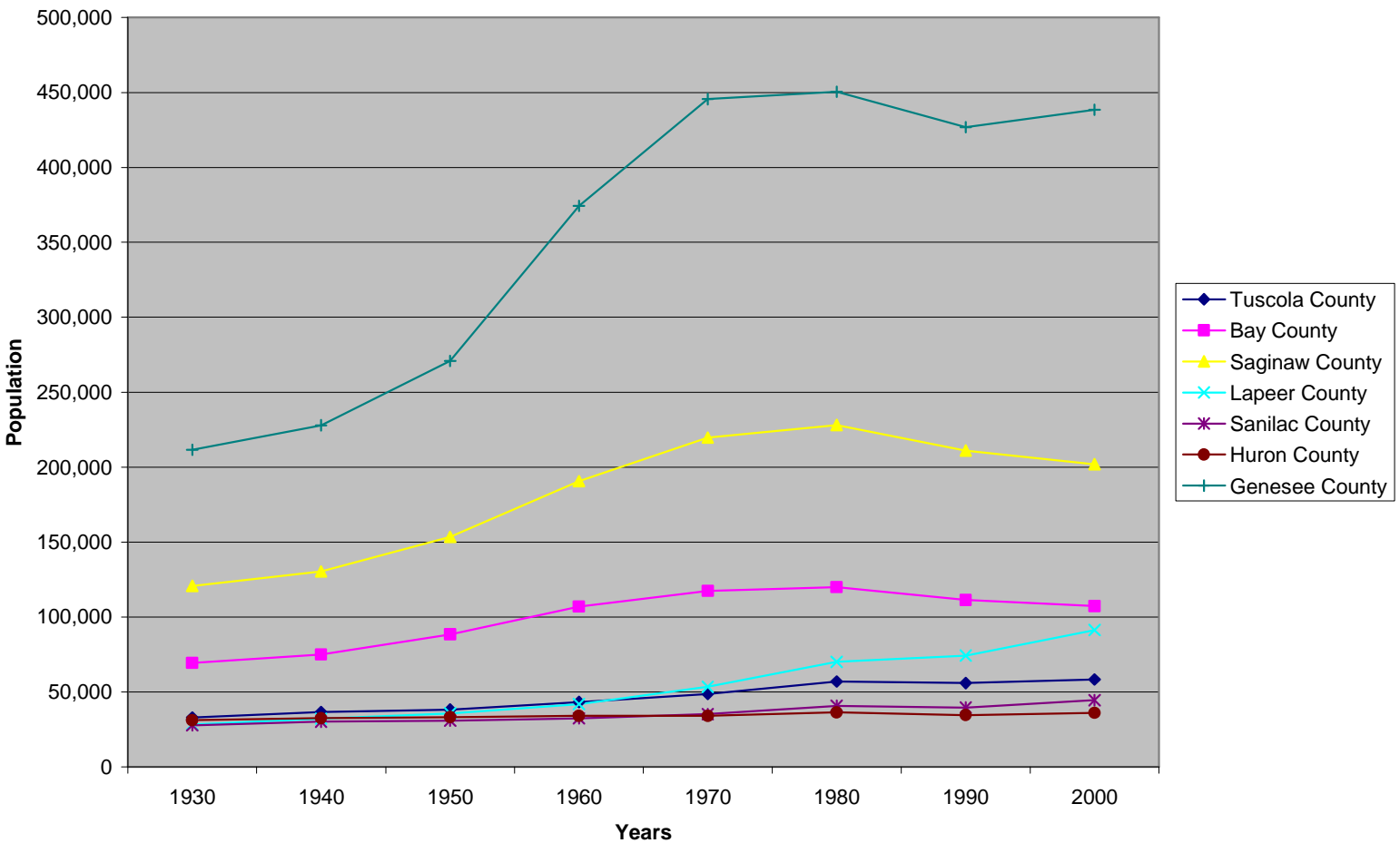


Table 2 identifies the distribution of population in Tuscola County and the change in population from 1990-2000.

Table 2:  
1990-2000 Population Comparison by Jurisdiction

	1990 Population	2000 Population	1990-2000 Change	1990-2000 % Change
Tuscola County	55498	58266	2768	2.43%
Akron Township	1609	1589	(20)	-0.63%
Akron, Village of	421	461	40	4.54%
Almer Township	2628	3023	395	6.99%
Arbela Township	3182	3219	37	0.58%
Caro, Village of	4035	4145	110	1.34%
Cass City, Village of	2276	2643	367	7.46%
Columbia Township	1383	1419	36	1.28%
Dayton Township	1706	1869	163	4.56%
Denmark Township	3369	3249	(120)	-1.81%
Elkland Township	3430	3659	229	3.23%
Ellington Township	1215	1304	89	3.53%
Elmwood Township	1260	1213	(47)	-1.90%
Fairgrove Township	1743	1749	6	0.17%
Fairgrove, Village of	592	627	35	2.87%
Fremont Township	3153	3559	406	6.05%
Gagetown, Village of	337	389	52	7.16%
Gilford Township	824	833	9	0.54%
Indianfields Township	6699	6392	(307)	-2.35%
Juniata Township	1666	1673	7	0.21%
Kingston Township	1498	1615	117	3.76%
Kingston, Village of	439	450	11	1.24%
Koylton Township	1446	1579	133	4.40%
Mayville, Village of	1010	1055	45	2.18%
Millington Township	4199	4459	260	3.00%
Millington, Village of	1114	1137	23	1.02%
Novesta Township	1464	1606	142	4.63%
Reese, Village of	1414	1375	(39)	-1.40%
Tuscola Township	2144	2152	8	0.19%
Unionville, Village of	590	605	15	1.26%
Vassar Township	3866	4356	490	5.96%
Vassar, City of	2559	2823	264	4.91%
Watertown Township	2132	2231	99	2.27%
Wells Township	1528	1946	418	12.03%
Wisner Township	795	749	(46)	-2.98%

Source: 2000 Census

Tuscola County has a significant number of residents age 65 and over. At the time of the 2000 U.S. Census, the population age 65 and over totals 12.79% of the population of residents in Tuscola County. This reflects an increased number since the 1990 census, where there was only 12.07% of the total population age 65 or older as reflected in Table 3.

**Table 3:**  
**1990 to 2000 Population Comparison for Persons Age 65+**

<b>Descriptor</b>	<b>1990</b>	<b>2000</b>	<b>1990 to 2000 Change</b>	<b>1990 to 2000 % Change</b>
Total Population	55,498	58,266	2,768	4.99%
# of residents, age 65+	6,696	7,450	754	11.26%
% of residents, age 65+	12.07%	12.79%	-	-

### **Employment Trends**

Tables 4 and 5 illustrate the distribution of Tuscola County's workforce from 1995 to 1998. Non-farm employment has remained relatively stable during this time with the majority of people employed in the services, state/local government, and retail trade occupations.

**Table 4:**  
**Farm & Non-Farm Employment in Tuscola County**

<b>By Type</b>	<b>2001</b>	<b>2002</b>	<b>2003</b>	<b>2004</b>
<b>Farm Employment</b>	1,662	1,667	1,656	1,685
<b>Non-Farm Employment</b>	16,918	16,857	16,901	17,019
<b>Total Employment</b>	18,580	18,524	18,557	18,704

Source: U.S. Department of Commerce, Bureau of Economic Analysis (April 2006)

Table 5:  
Non-Farm Occupational Distribution - Tuscola County

By Industry	2001	2002	2003	2004
<b>Private employment</b>	<b>13,068</b>	<b>12,973</b>	<b>12,989</b>	<b>13,241</b>
Forestry, fishing, and related activities	91	92	(D)	73
Mining	20	21	(D)	(D)
Utilities	(D)	(D)	(D)	(D)
Construction	1,069	1,104	1,090	1,104
Manufacturing	2,539	2,355	2,221	2,389
Wholesale trade	657	658	658	629
Retail trade	2,724	2,662	2,630	2,615
Transportation and warehousing	(D)	(D)	(D)	(D)
Information	297	261	251	242
Finance and insurance	593	599	618	643
Real estate and rental and leasing	369	349	372	384
Professional and technical services	(D)	(D)	300	312
Management-Companies and enterprises	(D)	(D)	0	0
Administrative and waste services	248	261	285	296
Educational services	201	197	207	(D)
Health care and social assistance	1,556	1,575	1,695	(D)
Arts, entertainment and recreation	172	203	256	258
Accommodation and food services	682	710	686	653
Other services (except public admin.)	1,064	1,138	1,133	1,197
<b>Government and government enterprises</b>	<b>3,850</b>	<b>3,884</b>	<b>3,912</b>	<b>3,778</b>
Federal, civilian	154	152	150	147
Military	116	117	114	113
State and local	3,580	3,615	3,648	3,518
<b>Total Nonfarm employment</b>	<b>16,918</b>	<b>16,857</b>	<b>16,901</b>	<b>17,019</b>

(D) Not shown to avoid disclosure of confidential information, but the estimates for this item are included in the totals.

Source: Regional Economic Information System, Bureau of Economic Analysis, U.S. Department of Commerce

**Number and Location of Households**

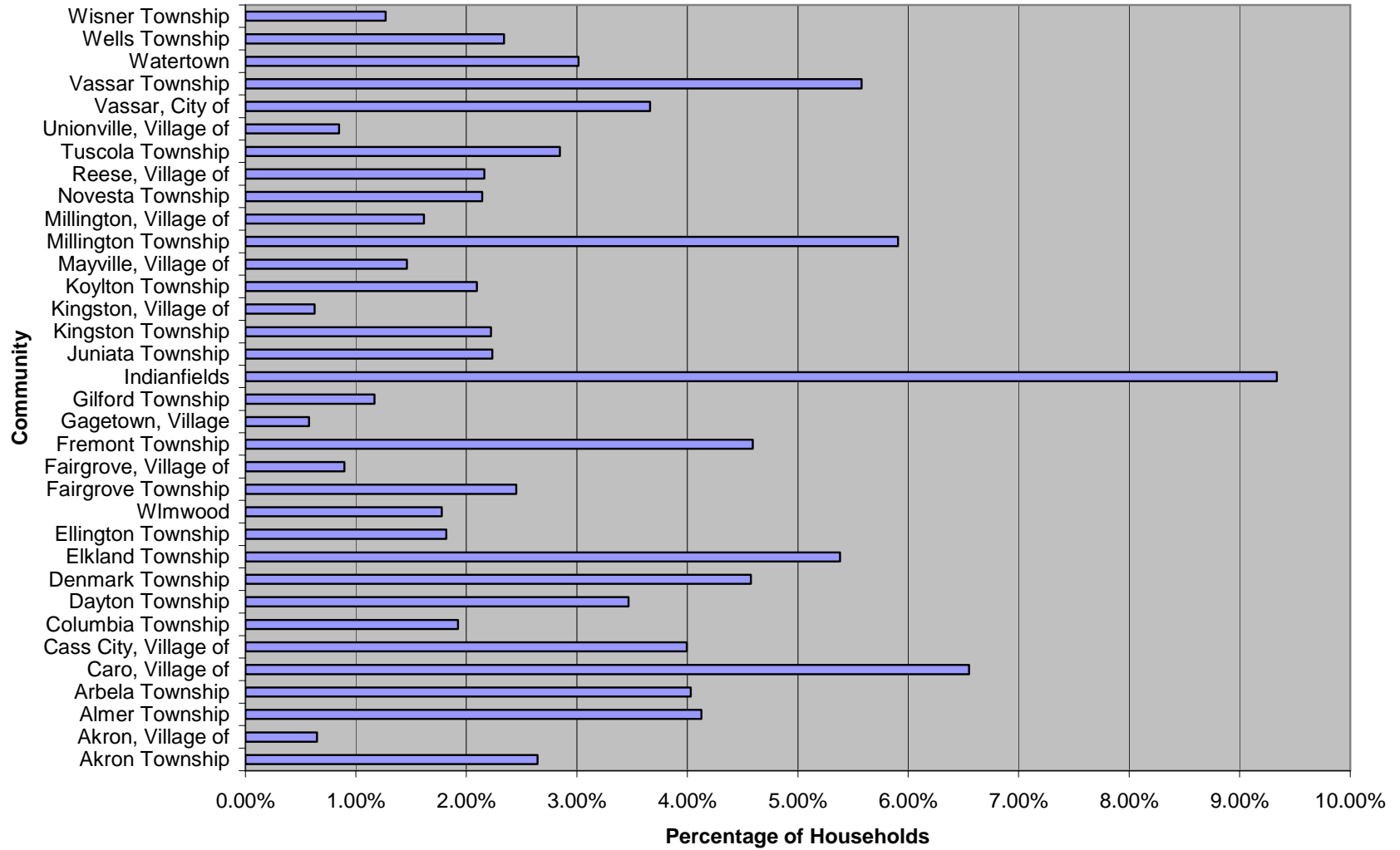
Table 6 displays the number of households in Tuscola County and the location (township, village or city) of these households.

Table 6:  
Location of Households

Municipality	# of Households	Municipality	# of Households
Akron Township	767	Indianfields Township	2707
Akron, Village of	188	Juniata Township	648
Almer Township	1197	Kingston Township	645
Arbela Township	1169	Kingston, Village of	182
Caro, Village of	1899	Koylton Township	608
Cass City, Village of	1159	Mayville, Village of	424
Columbia Township	558	Millington Township	1713
Dayton Township	1006	Millington, Village of	469
Denmark Township	1327	Novesta Township	622
Elkland Township	1561	Reese, Village of	627
Ellington Township	527	Tuscola Township	826
Elmwood Township	515	Unionville, Village of	246
Fairgrove Township	711	Vassar, City of	1062
Fairgrove, Village of	260	Vassar Township	1617
Fremont Township	1332	Watertown Township	874
Gagetown, Village of	167	Wells Township	679
Gilford Township	339	Wisner Township	368

Source: 2000 Census

### Location of Households



**Population Trends**

Table 7 depicts preliminary population projects for Tuscola County to 2020.

**Table 7:  
Preliminary Population Projections**

<b>Year</b>	<b>Population</b>
2005	59,307
2010	59,936
2015	60,286
2020	60,322

Source: Michigan Information Center

These projections assume a slight increase from 2005 through 2020. This reflects a change from previous population projections that reflected a leveling off of the population from 2015 to 2020. These figures indicate that future recreation plans need to be developed for a population base slightly larger than that of the present.

**Population Distribution**

**Age**

The aging population base is illustrated by an increasing median age, which was 28.1 in 1980, 33.0 in 1990 and 37.0 in 2000. Table 8 shows the age distribution for Tuscola County in 2000. The age group 25-44 decreased by 4.4%, while the 45-64 age group increased by 30.6% and the 75+ age group increased by 29.2%. Recent estimates show the present population of persons age 65 and over in Tuscola County to be 12.8 %.

**Table 8:  
Age Distribution**

<b>Age</b>	<b>Population</b>
Under 5 years	3,517
5 to 9 years	4,276
10 to 14 years	4,654
15 to 19 years	4,755
20 to 24 years	3,178
25 to 34 years	7,001
35 to 44 years	9,379
45 to 54 years	8,230
55 to 59 years	3,280
60 to 64 years	2,546
65 to 74 years	3,845
75 to 84 years	2,733
85 years and over	872

Source: 2000 Census

**Gender**

Tuscola County had a slightly higher percentage of female residents than male residents, 50.1% and 49.9% respectively, as reported in the 2000 Census. For individuals 18 years of age and older, there were 96 male residents for every 100 female residents in Tuscola County as compared to the statewide count of 93 males to every 100 females.

**Race**

Racially, Tuscola County is extremely homogenous when compared to the state as a whole. Table 9 shows the racial distribution for the county. This ethnic composition has been fairly static for an extended period of time and is not expected to change significantly in the future.

Table 9:  
Racial Distributions

Origin	Population
<b>One Race</b>	57531
White	55963
Black	622
American Indian, Eskimo or Aleut	334
Asian	182
Native Hawaiian or other Pacific Islander	11
Other	419
<b>Two or More Races</b>	735

**Income Level**

The State of Michigan experienced an economic downturn due, in part to automotive related reductions in the workforce and plant closings at the start of the 1990s. Tuscola County’s labor force was gravely affected as many automotive suppliers issued permanent layoff notices and, in some instances, ceased business operations. Table 10 compares the annual household income of Tuscola County residents during this time of economic hardship compared to today.

Table 10:  
Income Distribution

Annual Income	# of Households
Less than \$10,000	1398
\$10,000 - \$14,999	1318
\$15,000 - \$24,999	3207
\$25,000 - \$34,999	3151
\$35,000 - \$49,999	4233
\$50,000 - \$74,999	4655
\$75,000 - \$99,999	2062
\$100,000 - \$149,999	1204
\$150,000 - \$199,999	153
\$200,000 +	127

Source: 2000 Census

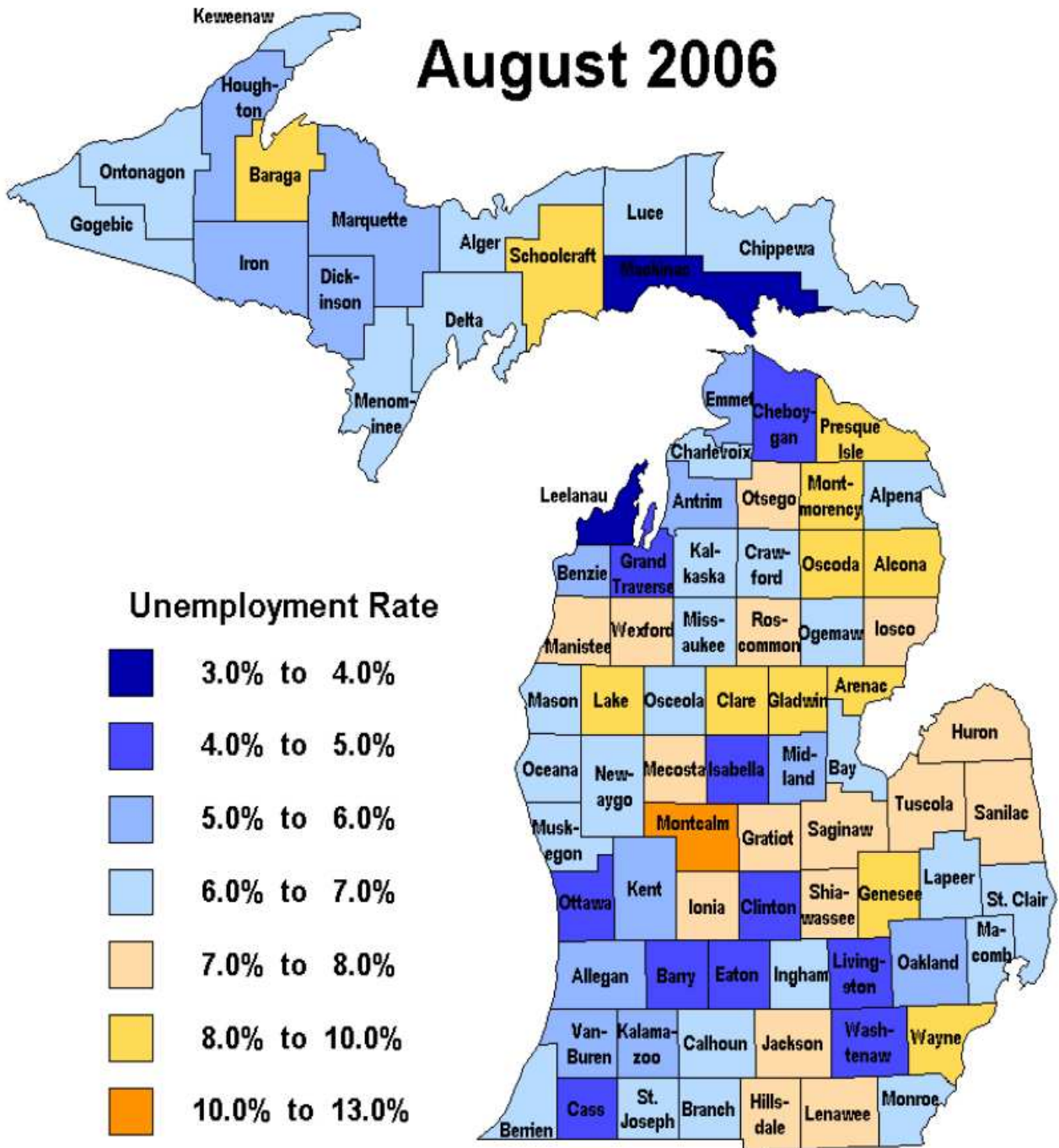
Median household income for Tuscola County has shown periods of decrease during the last five years. The county’s median income has also continued to fall less than the statewide average as depicted in Table 11.

Table 11:  
Median Household Income

Year	State of Michigan	Tuscola County
2000 Census	\$44,667	\$40,174
2001 Estimate	\$45,688	\$39,425
2002 Estimate	\$44,315	\$39,233
2003 Estimate	\$46,291	\$39,862
2005 Estimate	\$46,039	N/A

Source: U.S. Census Bureau, Housing and Income Statistics Division, Small Area Estimates Branch

After a double-digit unemployment rate in the early 1990's, there has been a significant decrease in the unemployment rate during the latter half of the decade. An average county unemployment rate of 4.8% existed in 2000. This has been on the rise and in September 2006 was at 7.4%, slightly higher than the state average of 7.1% in September 2006. The following map of the State of Michigan outlines the various ranges of unemployment rates for all counties. As depicted in this map, Tuscola County's unemployment is higher than many other counties in Michigan.



Source: State of Michigan Department of Labor and Economic Growth  
[http://dev.workforceexplorer.com/MICHIGAN/admin/uploadedPublications/1029\\_miurat\\_map.pdf](http://dev.workforceexplorer.com/MICHIGAN/admin/uploadedPublications/1029_miurat_map.pdf)

**Location of Population with Unique Needs**

**Persons with Disabilities**

Defined as having a mobility and/or a self-care limitation, the disability of non-institutionalized persons between 21 and 64 years of age in Tuscola County approached 17.5 % at the time of the 2000 Census. For Tuscola County residents ages 65 and over, this percentage increased to approximately 45% as demonstrated by the tables that follow.

Table 12:  
Disability Among Tuscola County  
Residents, Ages 21-64

Description	Number	Percentage
Persons, 21 to 64 years of age	32,342	N/A
Persons, 21 to 64 years of age, with a mobility and/or self-care limitation	5,660	17.50%

Source: 2000 Census

Table 13:  
Disability Among Tuscola County  
Residents, Ages 65+

Description	Number	Percentage
Persons, 65 years of age and older	7,171	N/A
Persons, 65 years of age and older, with a mobility and/or self-care limitation	3,221	44.90%

Source: 2000 Census

Recreation opportunities for persons with disabilities must include consideration of the individual's ability to access and utilize available properties and facilities. Future parks and recreation development must take into account the mobility limitations of persons with disabilities, especially among the elderly.

**Senior Citizens**

Recreational opportunities for older persons, especially for low-income senior citizens will become an increasingly important consideration in the design of future parks and recreation development.

At the time of the 2000 Census, 9 of the 23 townships in Tuscola County exceeded the county-wide average of 6.6% for seniors age 65+ living below the federal poverty level. The table that follows identifies those townships with the highest percentage of seniors living in poverty (refer to entries in red).

Table 14:

Percent of Persons with Incomes Below Poverty Level in Tuscola County

Municipality	Number of Residents Below Poverty Level - All Age Groups	Percentage of Residents Below Poverty Level - All Age Groups	Number of Residents Below Poverty Level - Ages 65+	Percentage of Residents Below Poverty Level - Ages 65+
Tuscola County	4647	8.20%	475	6.60%
Akron Township	187	11.70%	36	14.30%
Almer Township	203	6.90%	0	0.00%
Arbela Township	147	4.60%	11	3.30%
Columbia Township	145	10.50%	10	5.00%
Dayton Township	192	10.50%	26	11.00%
Denmark Township	155	4.80%	30	6.50%
Elkland Township	391	11.00%	252	9.50%
Ellington Township	108	8.30%	11	11.50%
Elmwood Township	133	10.80%	15	8.00%
Fairgrove Township	100	5.80%	9	3.20%
Fremont Township	332	9.70%	9	2.20%
Gilford Township	68	8.10%	15	12.80%
Indianfields Township	716	12.00%	90	9.90%
Juniata Township	164	9.90%	8	4.40%
Kingston Township	90	5.70%	12	6.40%
Kolyton Township	98	6.20%	7	4.20%
Millington Township	278	6.10%	31	7.00%
Novesta Township	186	11.40%	22	12.20%
Tuscola Township	99	4.40%	13	5.70%
Vassar, City of	230	9.20%	23	7.00%
Vassar Township	199	4.60%	0	0.00%
Watertown Township	165	7.60%	15	5.70%
Wells Township	166	9.80%	10	5.20%
Wisner Township	95	13.00%	6	4.70%

Source: 2000 Census

## Section III

# Physical Characteristics



## Community Description:

### Physical Characteristics

With Saginaw Bay as its northwest border, Tuscola County is predominantly a rural, agricultural community with several small and medium-sized villages and one city spanning 813 square miles. The land changes from a generally flat terrain in the northwest to a steeply rolling terrain in the southeast with the winding Cass River bisecting the county. The data and discussions that follow detail the physical characteristics of Tuscola County.

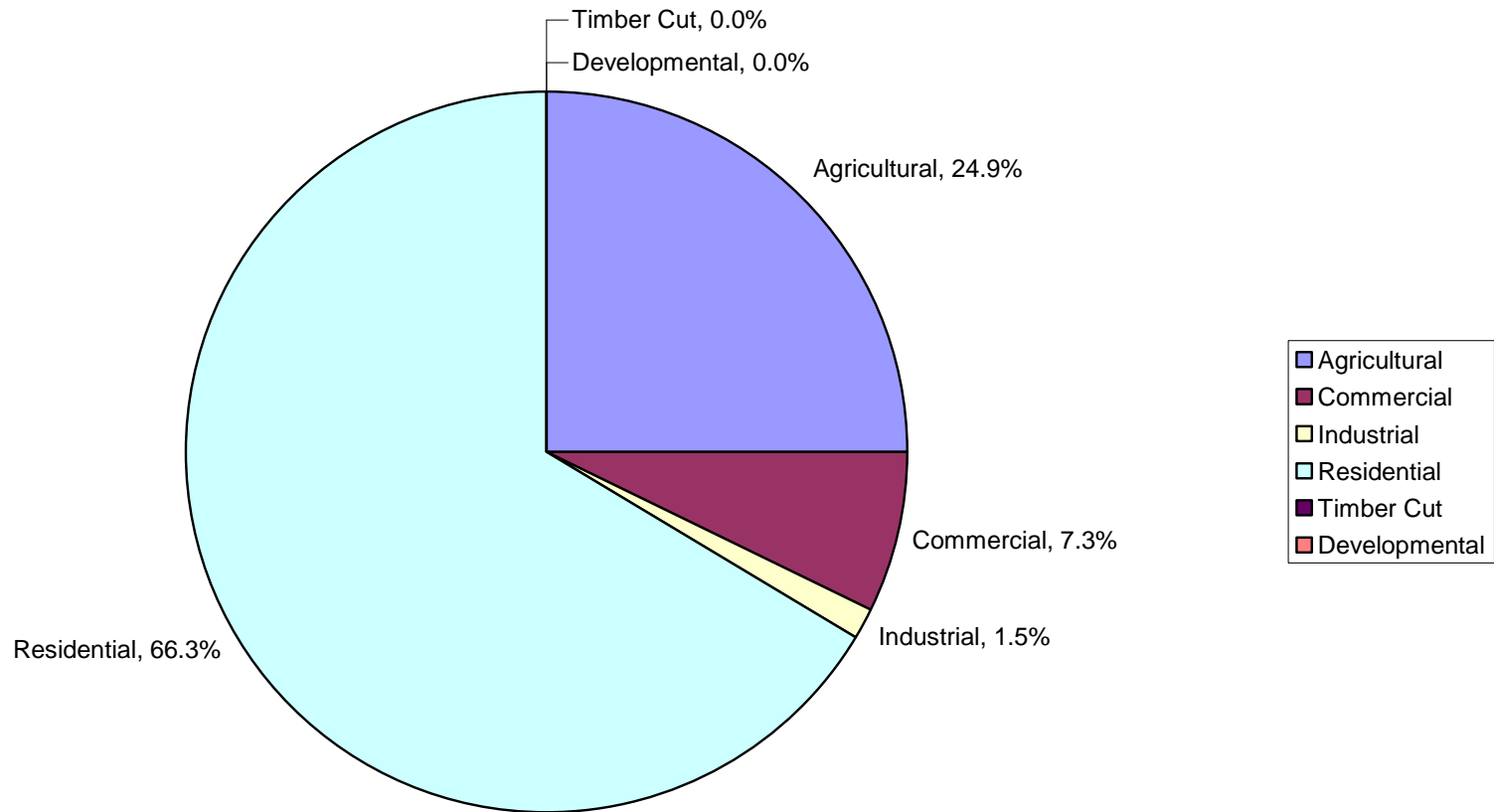
### Land Use Patterns

Table 15:  
Land Use / Cover in Tuscola County

Community	Agricultural	Commercial	Industrial	Residential	Timber Cut	Developmental
Akron	60.8%	2.0%	0.0%	37.2%	0.0%	0.0%
Almer	22.3%	22.1%	0.0%	55.6%	0.0%	0.0%
Arbela	22.6%	1.6%	0.2%	75.6%	0.0%	0.0%
Columbia	64.4%	2.1%	0.4%	33.1%	0.0%	0.0%
Dayton	22.4%	0.8%	0.0%	76.8%	0.0%	0.0%
Denmark	35.9%	5.5%	0.5%	58.0%	0.0%	0.0%
Elkton	15.7%	14.8%	3.6%	65.9%	0.0%	0.0%
Ellington	27.4%	2.7%	0.0%	69.9%	0.0%	0.0%
Elmwood	52.3%	2.6%	0.5%	44.6%	0.0%	0.0%
Fairgrove	53.3%	1.8%	0.0%	44.9%	0.0%	0.0%
Fremont	10.0%	6.4%	0.1%	83.4%	0.0%	0.0%
Gilford	72.6%	1.9%	0.0%	25.5%	0.0%	0.0%
Indianfields	2.0%	21.1%	7.4%	69.6%	0.0%	0.0%
Juniata	25.0%	1.7%	0.1%	73.2%	0.0%	0.0%
Kingston	33.0%	1.5%	0.0%	65.5%	0.0%	0.0%
Koylton	25.0%	1.3%	0.1%	73.6%	0.0%	0.0%
Millington	9.9%	7.2%	0.8%	82.1%	0.0%	0.0%
Novesta	36.0%	1.0%	0.0%	63.0%	0.0%	0.0%
Tuscola	30.1%	7.2%	0.3%	62.3%	0.0%	0.0%
Vassar	3.8%	2.6%	0.6%	93.0%	0.0%	0.0%
Watertown	19.6%	0.5%	1.6%	78.3%	0.0%	0.0%
Wells	22.1%	0.5%	0.4%	77.0%	0.0%	0.0%
Wisner	55.7%	2.5%	0.0%	41.8%	0.0%	0.0%
Vassar (City)	0.2%	18.7%	7.9%	73.2%	0.0%	0.0%
<b>Totals</b>	<b>24.9%</b>	<b>7.3%</b>	<b>1.5%</b>	<b>66.3%</b>	<b>0.0%</b>	<b>0.0%</b>

Source: Michigan Department of Treasury (2006)

### Tuscola County Land Use / Cover



Source: Michigan Department of Treasury (2006)

When these figures are compared to the 2000 values, it is apparent that residential land use in Tuscola County has increased in the last six years, with a corresponding decrease in farmland. Also, the industrial and commercial land use in Tuscola County has also shown a slight decrease. The increase in residential land use suggests a moderate need for additional recreational facilities to accommodate the increase in residential land usage. Note also, the relatively small amounts of commercial and industrial land in the county, particularly when compared to rapidly urbanizing areas like Lapeer County.

### **Topography**

The topography of Tuscola County changes from a generally flat terrain (lake plain) in the northwest, to gently rolling in the central county area to a steeply rolling terrain in the southeast. The dominant landforms are the result of the Wisconsin Glaciation, (the last glacial period, a.k.a. “Ice Age”). Elevation in the county runs from about 600 feet to 900 feet above sea level.

### **Water Resources**

The principal water resources in Tuscola County are the Saginaw Bay, which is part of Lake Huron, and the north branch of the Cass River, one of four major tributaries that flows into the Saginaw River. Approximately 1,259 miles of county-established drains are under the auspices of the Tuscola County Drain Commissioner. In addition, there are private-partnership drains under the auspices of the Michigan Department of Environmental Quality as well as other natural water resources throughout the county.

The north branch of the Cass River flows in a southwest direction from the headwaters near the Village of Uby (Huron County). The Cass River then intersects the northwest corner of Greenleaf Township (Sanilac County) and continues its flow into the Village of Cass City (Tuscola County) where several streams and creeks feed into the river. (The south branch of the Cass River near the Village of Cass City meanders in a southeast direction through Sanilac County while the Greenleaf Creek in Greenleaf Township connects the waterways of the Cass River to the Pigeon River in Huron County.)

From the Village of Cass City, the Cass River continues to flow in a southwest direction through the Village of Caro, City of Vassar, and City of Frankenmuth (Saginaw County), ultimately feeding into the Saginaw River. Several creeks, drains, and streams (e.g., Creenan Creek, Goodings Creek, Millington Creek, and Perry Creek) feed into the Cass River, creating opportunities for recreation activities such as canoeing, fishing, and swimming.

The northwest corner of Tuscola County borders Saginaw Bay, featuring approximately 20 miles of Lake Huron shoreline. Much of the land adjacent to the bay is part of the Fish Point and Quanicassee Wildlife Areas. There are no cities or villages directly on the bay (like Sebawaing in Huron County), and the land along the edge of the wildlife areas is used for residential and agricultural applications. There are several boat launch areas along the bay and Vanderbilt County Park and Campground is adjacent to the wildlife area.

The Saginaw Bay, Cass River, and more than ten small inland lakes represent the water resources of Tuscola County (inland lakes include Becroft, Caro, Cat, Cedar, Evergreen, Harmon, Harvey, Mud, Murphy, North, Odessa, Phelps, and Shay). Only two of the inland lakes – Murphy Lake and Shay Lake – have a lake-level control structure.

The Cass River drainage system is also an important recreational source for the county and for the “Thumb” area of east central Michigan. Flooding has been an ongoing problem for the City of Vassar. The Cass River 100-year floodplain boundaries within the area are indicated on the “FHA Flood Hazard Boundary Map” prepared in 1976 by the Federal Insurance Administration (HUD) publication. Consideration of this information and its effects should be used in determining future recreation land acquisition and development along the Cass River.

### **Fish and Wildlife Resources**

Species of fish and wildlife in Tuscola County are “numerous”, according to Mr. George Kerschenheiter, a DNR Wildlife Technician. The Cass River is described as a good warm-water fishery for bass, crappies and pike. The county’s forest vegetation supports such wildlife species as deer, pheasants and turkeys; as well as amphibians, reptiles and songbirds.

## **Soils and Vegetation:**

### **Soils**

Tuscola County is located in the east central part of the Lower Peninsula at the base of the “Thumb.” The county contains 812 square miles comprised of a total of 519,793 acres. Four broad areas divide the county from northeast to southwest. In the first area, beginning at the southeastern part of the county, there is undulating hilly loam and sandy soils with wet soils and potholes and depressions in the numerous lower areas. The second general area lies between the first described area and the Cass River. This nearly level to rolling area consists of sandy soils utilized for pasturing animals, and some wooded areas. The next area lies to the north side of the Cass River and consists of rolling loam and sand. Cash crops and livestock farming are common in this portion of the county. The remaining area lies between the third area and Saginaw Bay and is comprised of nearly level to undulating loam and sandy soils. These are also used extensively for cash crops.

Networks of deep dredge drains lead into the Saginaw Bay drain in the northwestern third of the county. The drainage basin of the Cass River includes the southern two-thirds of the county. The Cass River drains to the Saginaw River before finally emptying into Saginaw Bay.

A soil survey of Tuscola County has been prepared by the United States Department of Agriculture Soil Conservation service in cooperation with the Michigan Department of Agriculture, Michigan Agricultural Experiment Station and Michigan Technological University. The current survey was issued in September, 1986 and replaces surveys completed in 1926 and 1974 (see Soils, Map Two).

Part of the continuing planning process of potential recreation areas should include a consideration and evaluation of soil types in existence and should be a contributing factor in determining the eventual recreational use.

The soils of Tuscola County can be categorized into ten broad soil associations, including:

1. Essexville-Aquents-Tappan Association – These soils are nearly level, poorly drained to very poorly drained sandy and loamy soils on lake margins, beaches, till plains and lake plains. They are located along the Saginaw Bay.
2. Tappan Association – These soils are nearly level, poorly drained and loamy soils. They are located on moraines and till plains.
3. Tappan-Londo-Avooca Association – These soils are nearly level, poorly drained to somewhat poorly drained, loamy and sandy soils. They are located on lake plains, till plains and moraines.
4. Metamora-Capac-Corunna Association – These soils are nearly level to undulating somewhat poorly drained to poorly drained loamy soils located on till plains and moraines.
5. Wixom-Wolcott-Pipstone Association – These soils are nearly level to gently undulating, somewhat poorly drained to very poorly drained, sandy and loamy soils located on outwash plains, moraines and till plains.
6. Guelph-Londo-Tappan Association – These soils are nearly level to rolling, well drained to poorly drained, loamy soils located on moraines and till plains.
7. Perrin-Wasepi-Gilford Association – These soils are nearly level and gently undulating, running a range from moderately well drained to somewhat poorly drained to very poorly drained loamy and sandy soils on outwash plains, lake plains and beaches.
8. Pipestone-Granby-Chelsea Association – These soils are nearly level to gently rolling somewhat poorly drained, poorly drained and somewhat excessively drained sandy soils on outwash plains, moraines, lake plains and beaches.
9. Marlette-Capac-Spinks Association – These soils are nearly level to steep, well drained and somewhat poorly drained loamy and sandy soils. They are located on moraines, outwash plains, and beaches.
10. Houghton-Adrian Association – These soils are nearly level, very poorly drained, organic soils in bogs on moraines, till plains and outwash plains.

As noted in the United States Geological Survey's Soil Conservation Service Soil Survey of Tuscola County, Michigan, *this soil survey is designed and can be used to evaluate the potential of the soil and the management needed ... to plan land use, select sites for construction and identify special practices needed to insure proper performance.* In addition to the Tuscola

County Planning Commission, official and specialists in recreation can use the survey to help them understand, protect and enhance specific recreation sites referenced herein.

Broad areas of soils are shown in a general soil map for Tuscola County. The location of the site-specific soils are shown on detailed soil maps in the U.S.D.A. soil survey of Tuscola County. Each soil in the survey is described and information on specific uses is provided for each soil type (see park soil type and development characteristics maps). Copies of the Tuscola County survey for review and assistance (along with additional information on required permits and applications that may affect proposed uses) may be obtained at the local office of the soil conservation service, Michigan State University Extension office and the Tuscola County Drain Commissioner.

### **Vegetation**

There are two main forest types in Tuscola County: Aspen-Birch and Maple-Beech-Hemlock. Much of the land in Tuscola County is utilized for agriculture. Main agricultural crops include corn, dry beans, winter wheat, sugar beets, soybeans, oats and grass-legume hay.

### **Transportation Systems**

Tuscola County is the home of five trunk lines, three rail lines and one bus line. Beginning in 1984, the Caro Transit Authority (CTA) has provided demand response public transportation (door-to-door) for two of Tuscola County's 23 townships, Almer and Indianfields. On April 25, 2000, CTA began offering regional transportation services from Caro (Tuscola County) to Saginaw (Saginaw County). The regional system operates two days a week, Tuesday and Thursday, with flexibility for a third day if the need arises. The major highways in the county are M-15, M-24, M-25, M-46, M-81, and M-138.

### **Climate**

The climate in Tuscola County is generally fair with annual precipitation of 28 inches and average snowfall of 37 inches. On average, temperatures range from 13 degrees to 29 degrees in January (winter) to 57 degrees to 84 degrees in July (summer). The county's growing season is 122 days, with an average of 15 days a year being above 90 degrees and 14 days a year being below the freezing point (all temperatures are in degrees Fahrenheit).

### **Environmental Issues**

One of the most pressing environmental issues affecting Tuscola County is the prevalence of groundwater contamination. Problems have resulted from the runoff of pesticides and fertilizers used in agricultural and residential applications as well as the improper disposal of sundry items like used oil and batteries. Tuscola County presently offers a facility for disposal of these sundry items.

Some potential sources of groundwater contamination in Tuscola County are the presence of old uncapped domestic wells and deteriorating underground storage tanks (like those used for oil and

gasoline) which have the potential to leak. Other potential environmental issues in Tuscola County include high levels (naturally occurring) or arsenic in well water and Radon gas contamination.

Tuscola County also has a well-established Mosquito Abatement program, which significantly reduces the amount of disease-carrying mosquitoes present during the summer months. A recycling center, the Tuscola County Recycling Material Recovery Facility, recycles all of the major recyclables such as glass, plastic and cardboard.

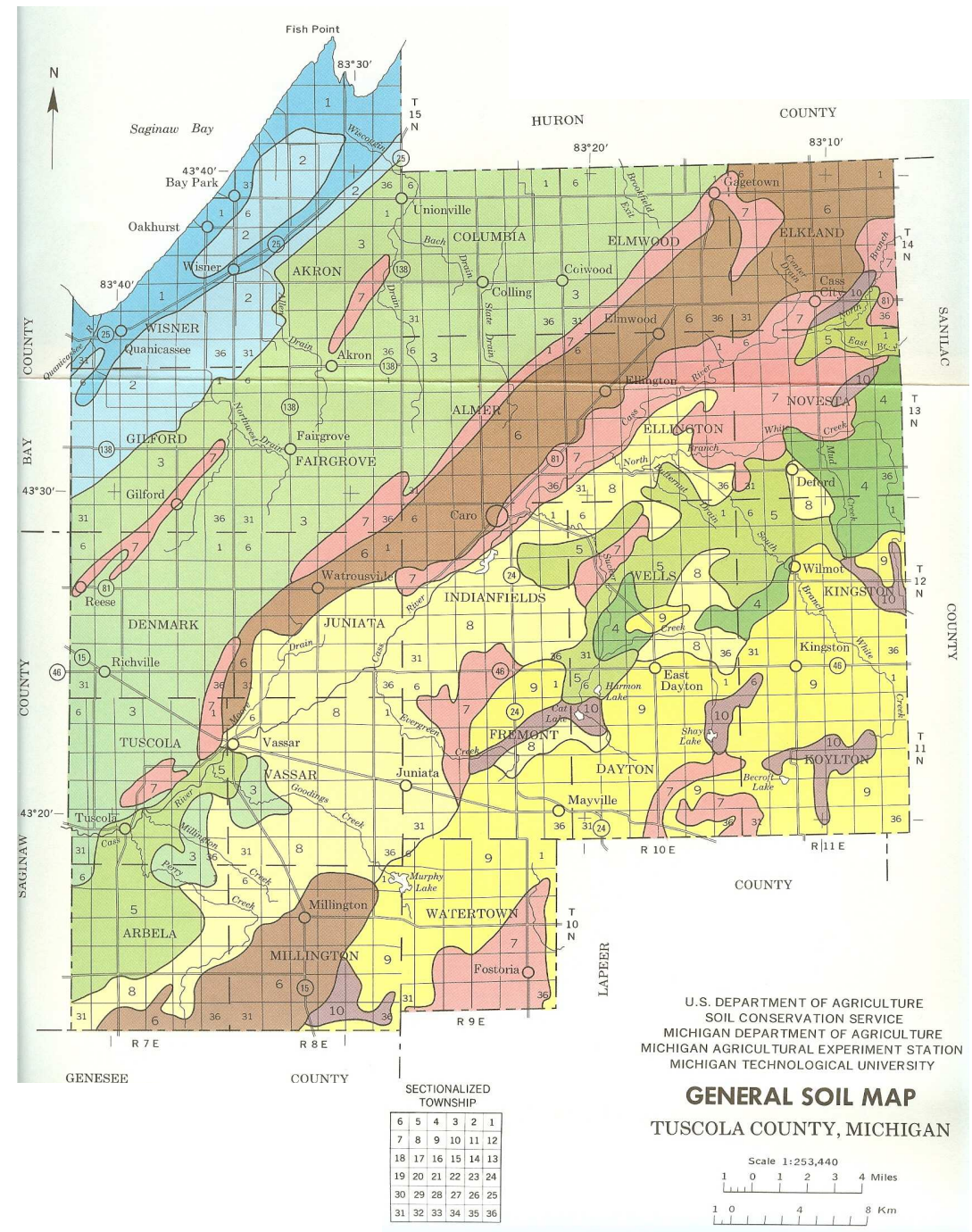
### **Zoning**

The Michigan Department of Treasury records for 2006 shows the property breakdown in Tuscola County was zoned as 24.9% agricultural, 7.3% commercial, 1.5% industrial and 66.3% residential. Compared with data compiled over the last decade, the amount of land used for residences is on the increase, while farmland is decreasing in Tuscola County.

# Tuscola County Soils Map

## Legend

- NEARLY LEVEL SOILS THAT ARE POORLY DRAINED AND VERY POORLY DRAINED**
- 1** Essexville-Aquents-Tappan association: Nearly level, poorly drained and very poorly drained, sandy and loamy soils on lake margins, beaches, till plains, and lake plains
  - 2** Tappan association: Nearly level, poorly drained, loamy soils on lake plains and till plains
- NEARLY LEVEL TO UNDULATING SOILS THAT ARE SOMEWHAT POORLY DRAINED TO VERY POORLY DRAINED**
- 3** Tappan-Londo-Avoca association: Nearly level, poorly drained and somewhat poorly drained, loamy and sandy soils on lake plains, till plains, and moraines
  - 4** Metamora-Capac-Corunna association: Nearly level to undulating, somewhat poorly drained and poorly drained, loamy soils on till plains and moraines
  - 5** Wixom-Wolcott-Pipestone association: Nearly level and gently undulating, somewhat poorly drained and very poorly drained, sandy and loamy soils on outwash plains, moraines, and till plains
- NEARLY LEVEL TO ROLLING, LOAMY SOILS**
- 6** Guelph-Londo-Tappan association: Nearly level to rolling, well drained to poorly drained, loamy soils on moraines and till plains
- NEARLY LEVEL AND GENTLY UNDULATING, LOAMY AND SANDY SOILS**
- 7** Perrin-Wasepi-Gilford association: Nearly level and gently undulating, moderately well drained, somewhat poorly drained, and very poorly drained, loamy and sandy soils on outwash plains, lake plains, and beaches
- NEARLY LEVEL TO GENTLY ROLLING, SANDY SOILS**
- 8** Pipestone-Granby-Chelsea association: Nearly level to gently rolling, somewhat poorly drained, poorly drained, and somewhat excessively drained, sandy soils on outwash plains, moraines, lake plains, and beaches
- NEARLY LEVEL TO STEEP, LOAMY AND SANDY SOILS**
- 9** Marlette-Capac-Spinks association: Nearly level to steep, well drained and somewhat poorly drained, loamy and sandy soils on moraines, outwash plains, and beaches
- NEARLY LEVEL, ORGANIC SOILS**
- 10** Houghton-Adrian association: Nearly level, very poorly drained, organic soils in bogs on moraines, till plains, and outwash plains
- \*The texture terms given in the descriptive headings refer to the surface layer of the major soils in each association.



## Section IV

# Administrative Structure



## **Administrative Structure:**

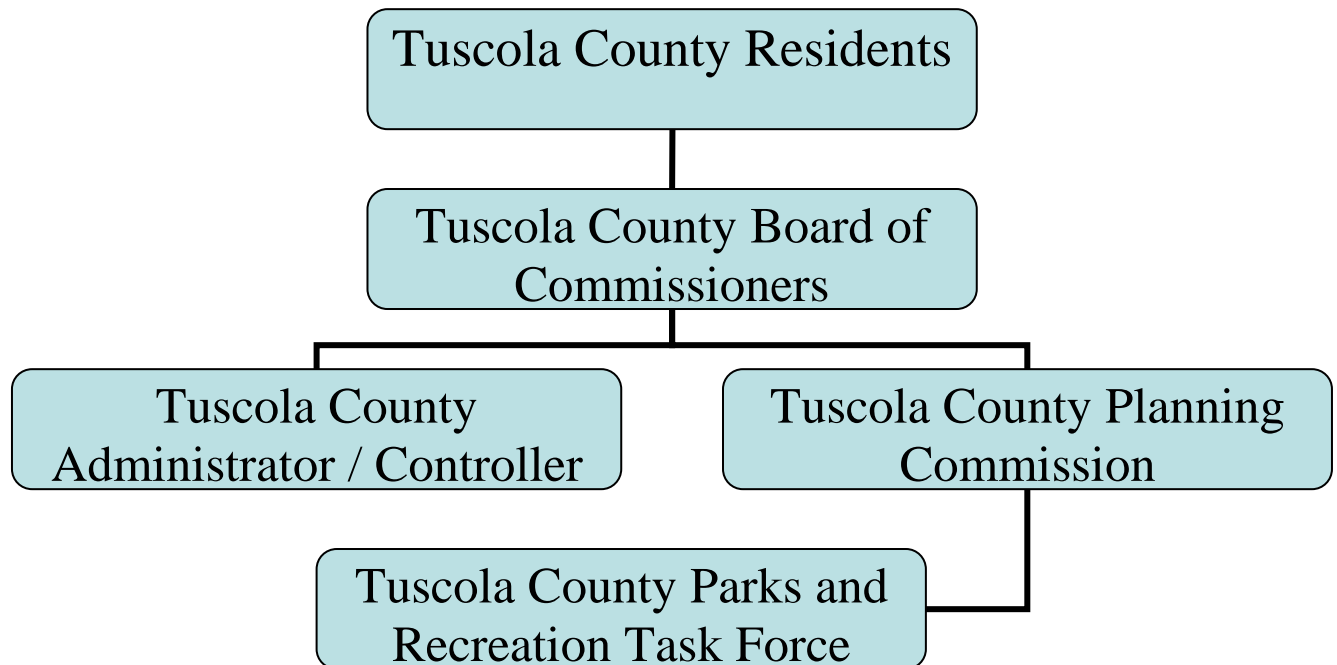
### **Organization**

The Tuscola County Planning Commission serves under the Tuscola County Board of Commissioners. With the current approval from the Tuscola County Board of Commissioners, the Tuscola County Parks and Recreation Commission will be re-established in the year 2007. The Commission will then take over the tasks of Tuscola County Parks and Recreation improvements as directed by the Board.

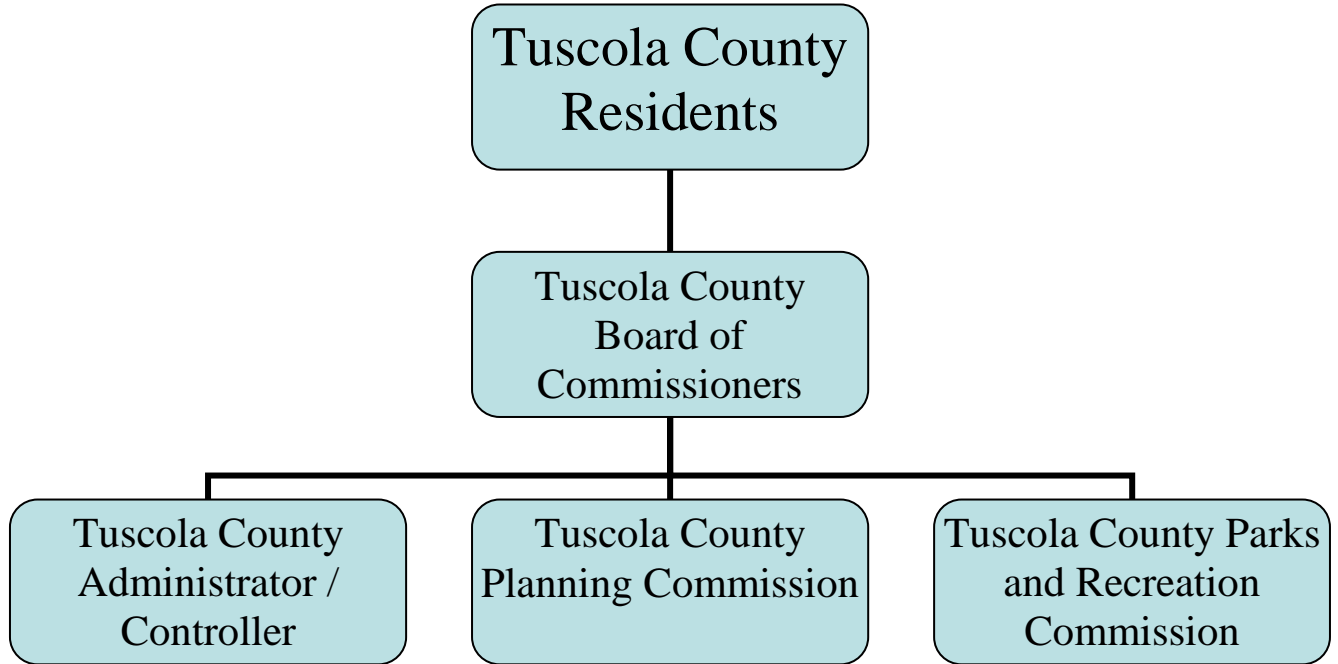
The county has one park, Vanderbilt County Park and Campground, they own and operate. A group of concerned residents and local officials has been working toward revitalizing of the park. This county park will host a revitalization event to encourage use of the park in the spring of 2007.

Below are two organizational charts, one prior to the conversion and one after the conversion to an authority.

## **Organizational Chart Before Re-establishment of the Commission**



# Organizational Chart After Re-establishment of Commission



## Role of the Tuscola County Parks and Recreation Commission

The Tuscola County Parks and Recreation Commission, when established, is responsible for the administration of park facilities and recreational programs that the county provides, participates in, and/or operates at the discretion of the Tuscola County Board of Commissioners. This group was originally formed soon after the adoption of the 1989 Master Plan, under the name Tuscola County Parks and Recreation Commission. This group assists with the following:

- 🌲 Shared supervision of the park host at Vanderbilt County Park and Campground
- 🌲 Promotion of Vanderbilt County Park and Campground for day usage and overnight camping
- 🌲 Identification of needed improvements at Vanderbilt County Park and Campground
- 🌲 Recommendations regarding the annual budget and expenditures for Vanderbilt County Park and Campground
- 🌲 Develop and recommend parks and recreation policies for Tuscola County
- 🌲 Encourage local and county partnerships to support parks and recreational opportunities throughout Tuscola County
- 🌲 Develop short-term and long-range parks and recreational strategies for Tuscola County
- 🌲 Advocate for countywide parks and recreation opportunities as a *quality of life* issue that benefits residents of all ages

### **Partnerships**

The Parks and Recreation Commission, as established, will be open to work with volunteers/volunteer groups to advance the county goals of promoting recreational opportunities for its residents. The county is blessed with several focused and determined volunteers that have made it possible to revitalize the county's recreation and the commission looks forward to their support.

### **Relationship with Other Agencies**

The Tuscola County Parks and Recreation Commission has established beneficial partnerships with other county departments and community groups. For example, the Tuscola County Sheriff Department's Jail Worksite Program (assignment of jail inmates to a public agency/site needing labor-intensive assistance) performs general maintenance and grounds keeping tasks at Vanderbilt County Park and Campground.

The Tuscola County Parks and Recreation Commission also have an interest in and commitment to the development of local, county and regional partnerships that support parks and recreational opportunities for all residents. Cooperative ventures with local municipalities and other regional agencies like East Central Michigan Planning and Development Regional Commission are encouraged by the Tuscola County Parks and Recreation with the understanding that any scheduling, maintenance, operation, or expansion efforts remain the responsibility of the local municipality.

### **Parks and Recreation Policies and Procedures**




The park rules and regulations were reviewed and adopted by the County Board of Commissioners on Dec. 27, 2006. A copy of the rules and regulations can be obtained at the County Controller's office.


### **Funding**

Tuscola County Parks and Recreation Commission is dedicated to the purpose of recreation improvements and realizing its goals of increased opportunities for its residents. The Tuscola County Board of Commissioners appropriates funds based upon the projects and requests of the Commission. The county looks towards the state and federal grant monies to aid further development and creation of opportunities to address the recreational needs of the county.

### **2007 Approved Budget**

Anticipated revenues and subsequent expenses for Tuscola County Parks and Recreation are approved by the Tuscola County Board of Commissioners are outlined below:

<u>Revenues</u>	<u>Amount</u>
 Vanderbilt County Park and Campground User Fees	\$10,750.00
 General Fund	\$ 3,000.00
 DTE Tree Planting Grant	\$ 3,000.00
<b>Total Revenues</b>	<b>\$16,750.00</b>

<u>Expenses</u>	<u>Amount</u>
 Vanderbilt County Park and Campground Expenses	
o Supplies	\$ 250.00
o Grounds Care and Maintenance	\$ 1,500.00
o Utilities	\$ 4,000.00
o Miscellaneous	\$ 1,000.00
o Contractual Park Attendant (Host)	\$ 2,500.00
o Equipment	\$ 1,500.00
o DTE Tree Planting Grant	\$ 3,000.00
o Repayment to General Fund	\$ 3,000.00
<b>Total Expenses</b>	<b>\$16,750.00</b>

**2007 Budget Summary**

 Total Revenues	\$16,750.00
 Total Expenses	\$16,750.00
 Net (Rev/Exp) for Vanderbilt County Park	\$ -

## Section V

# Description of Planning Process



## **Description of Planning Process**

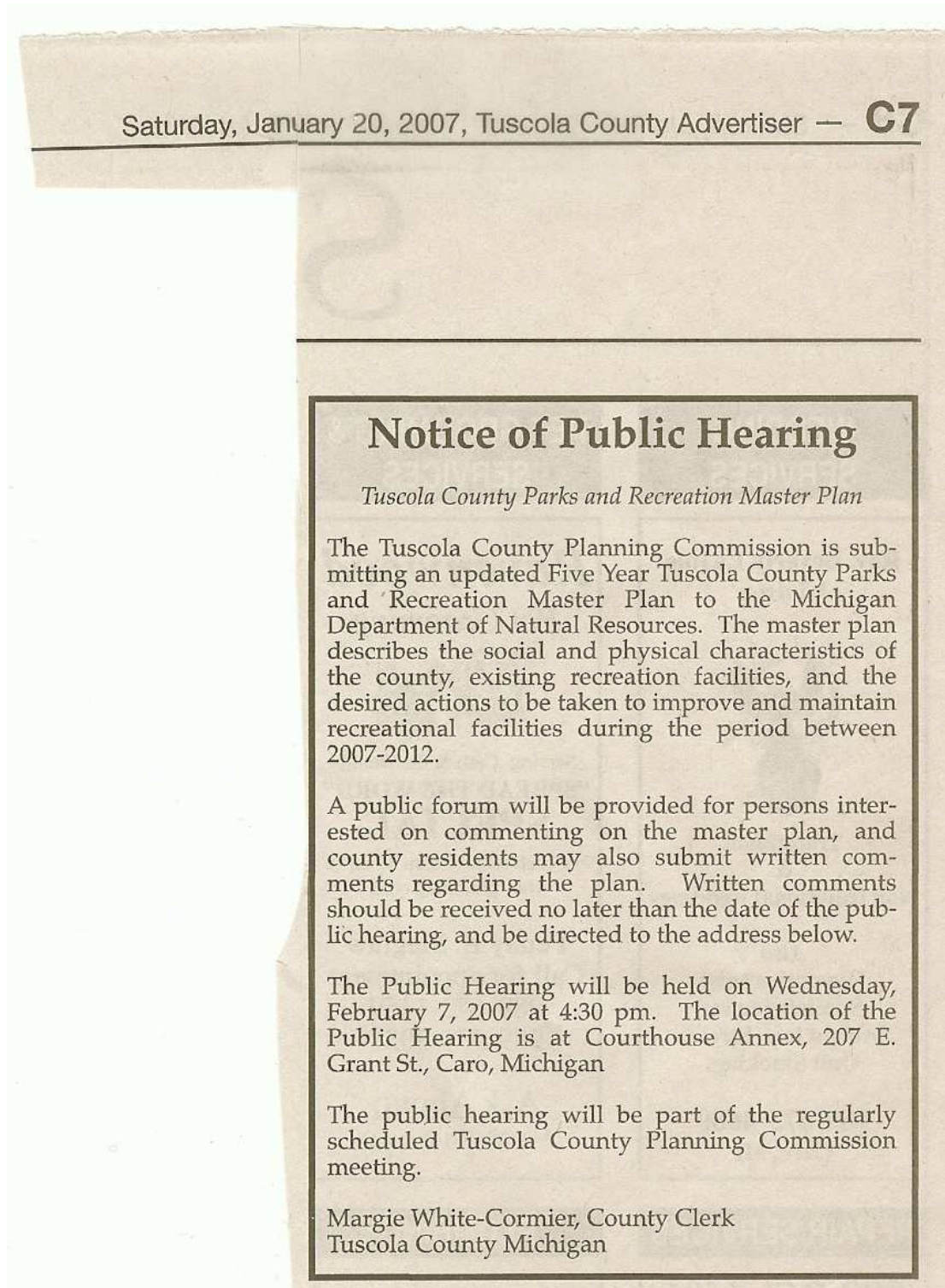
Tuscola County Parks and Recreation works towards the ultimate goals of providing recreation opportunities for our community and visitors of our areas. The purpose of the plan is to provide direction for the community regarding the future development of recreation resources. The plan is intended to be used by Tuscola County Parks and Recreation Commission, when established, and Village Trustees as well as the Parks and Recreation Department for guiding decisions concerning recreation, parks and public open space. The Recreation Plan should be updated every five years as per the Michigan Department of Natural Resources to keep it current according to local changes and priorities, be eligible to apply for grants through the DNR.

### **Plan Development**

The 2007-12 Recreation Plan for the Tuscola County was prepared by several volunteers from the County, surrounding communities and the regional planning organization. The Plan was completed in stages and presented to the Planning Commission at a public meeting. Major steps in the development of this plan were as follows:

1. Initial meeting of the County Planning Commission.
2. Meeting of the Tuscola County Park, Recreation, Trails and Tourism Task Force. The Task Force invited volunteers from several local/regional municipal/private representatives.
3. County Bus Tour of the recreational facilities.
4. Meeting of the Task Force in which the Recreation Plan Update sub-committee was formed to work exclusively on the task.
5. Several meeting of the sub-committee to discuss goals for the upcoming five years.
6. Letter sent to all the local municipal jurisdictions, major businesses and agencies including volunteer groups and non-profit agencies asking about future potential projects.
7. Public Hearing notice published in the paper and Clerk's office. Initial draft of plan presented to the public at the Planning commission meeting on Feb 7, 2007.
8. One month citizen input window kept for review and comments. Revisions were made based on discussions. Plan was available at the public library and the county clerk's office.
9. Final draft of the Plan completed based upon additional comments from the citizens and Planning Commission.

10. Final recommendation made by the Planning Commission on Mar 7, 2007 to the Board of commissioners to adopt the 2007-12 Tuscola County Parks and Recreation Plan.
11. Final adoption of the plan by resolution by the Board of Commissioners on March 13, 2007.



Saturday, March 3, 2007, Tuscola County Advertiser — **B9**

### **Notice of Public Meeting**

*Tuscola County Parks and Recreation Plan 2007-12*

Tuscola County Board of Commissioners will hold a public meeting on March 13th, 2007 at the County Annex Building, 207 E. Grant Street, Caro, MI to consider adoption of updated Tuscola County Parks and Recreation Plan 2007-12. This meeting will be a part of the Board's regular meeting schedule. After adoption the Plan will be sent to the Michigan Department of Natural Resources for approval.

The official public hearing for the Plan was held by the County Planning Commission on February 7th, 2007 at 4:30 pm. The Plan has been open for public input with a copy kept at the Public Library and Clerk's Office for 30 days until March 7th. The County Planning Commission will consider recommendation of the Plan to the Board on March 7th, 2007 at 4:30 pm.

Both these meetings will provide interested citizens the opportunity to give their input and work with the County for advancement of its recreation opportunities.

Margie White-Cormier, Clerk  
Tuscola County

### **Key Persons Involved in the Process**

The following people played key roles in the completion of the Tuscola County Parks & Recreation Master Plan:

Gerry Peterson, Chairman, County Board of Commissioners  
Richard Peter, County Planning Commission  
Rebecca Kochenderfer, Clerk, Village of Millington  
Stephen Erickson, Village Manager, Village of Millington  
Jim Abby, Attorney at Law  
Kris McArdle, Marketing Director, Thumb Area Tourism Council  
Chuck Frost, Thumb Area Tourism Council  
Lana Martell, President, Millington – Arbelo Parks & Recreation Commission  
Jason Davis, Tuscola County Trailways Committee  
A special thanks to Anamika Laad from the Michigan East Central Regional Planning Commission.

## **Goals and Objectives**

Tuscola County Parks and Recreation works towards the ultimate goals of providing recreation opportunities for our community and visitors of our areas. The following is designed to be used as a guide for Tuscola County’s administrators, the Parks and Recreation Department, and stakeholder groups as they work together to fulfill the recreational goals as developed.

### **GOAL 1. Establish stable and secure funding to improve and maintain county parks and recreation programs.**

- Fundraising activities- Work with existing volunteer organizations to increase membership and enthusiasm.
- Maximize volunteers’ personal resources such as time and energy, monetary donations, real property, and physical and intellectual talents.
- County support- Request financial assistance from county administrators and residents.
- Local, state, and federal grants- Seek and apply for funding opportunities designated for specific projects and programs.

### **GOAL 2. Improve accessibility by providing barrier-free/universal access to existing and future facilities.**

- Assessment- After thorough assessment of existing facilities, determine if improvements or additions are needed. Research the specifics of cost, time, etc. and develop a project priority list for each park.
- Planning- Incorporate barrier-free/universal design features in future developments.

### **GOAL 3. Preserve and protect valuable water and land resources.**

- Acquire land- Seek opportunities to acquire land for the purpose of preservation.

- Develop policies- Through public input it is noted that the preservation and enjoyment of wildlife in its natural state is highly desired. Establish park preservation and protection policies and encourage responsible use through example. Encourage the county to adopt land use policies that enhance the protection of natural features, land, and water quality.
- Utilize educational opportunities- Develop and implement educational programs designed to promote land conservancy for the protection of high quality natural areas in the county.
- Support ongoing regional efforts- Support the efforts of the East Central Michigan Planning and Development Regional Commission (ECMPDRC) and Saginaw Bay Watershed Initiative (Saginaw Bay WIN) projects to protect Lake Huron Coastal areas, woodlands, wetlands, and the area surrounding the Cass River.

**GOAL 4. Preserve and protect properties with historic and cultural value.**

- Identification program- Request assistance from volunteer organizations, area colleges, historic societies, and the Chippewa Indians to identify properties with historic and/or cultural value.
- Preserve and protect- Promote activities and policies that will preserve and protect identified properties as well as provide rehabilitation and enhancement where needed.

**GOAL 5. Establish connections between existing and future trails and pathways including greenways and blue-ways.**

- Mapping- Work with the East Central Michigan Planning and Development Regional Commission (ECMPDRC) to develop maps indicating existing trail ways and possible locations for linkages.
- Systematic approach- Develop a prioritized systematic approach for the acquisition and development of properties that will directly connect existing trail ways.
- Regional approach- Pursue opportunities for connecting trail ways with neighboring municipalities in Michigan. (e.g. Tip of the Thumb Heritage Water Trails)
- Promote benefits- Develop a marketing strategy to promote the need for increasing desirable trail ways which will include paved and unpaved hiking and biking trails, non-motorized trails, waterways and open space greenways. Promote the increased health and economic benefits derived from the availability of enhanced and interconnected trail resources.
- Promote regional effort- Work with the neighboring counties, ECMPDRC and MDOT to promote the development of trails and improving connectivity.

**GOAL 6. Respond to changing demographics when planning recreational facilities and programs.**

- Understand changes- Maintain awareness of population growth areas. Understand the impact to recreational programs and facilities through changes in different age groups, conditions of health and disabilities, and socio-economic indicators.
- Plan accordingly- By seeking community support and input, define, plan, and develop projects that will meet the needs and desires of the changing demographic.
- Development and Improvement Projects- From previous recreation plans and surveys, and through current information gathered for Tuscola County specific projects and areas of improvement have been proposed and planned for. The five-year plan for those projects is in the next chapter “Action Plan”.

**GOAL 7. Enhance the positive working relationship with the Native Americans.**

- Historic and cultural significance- Through partnerships with the Native Americans, educational programs could be established to increase knowledge and respect for the rich cultural history of Tuscola County’s first inhabitants.
- Natural resources- Seek to establish coordinated efforts for the protection and enhancement of natural resources and natural recreation areas. Seek input and cooperation for the identification and preservation of sites and properties that have historic and cultural value and promote rehabilitation and enhancement where needed.

**GOAL 8. Create and implement a marketing campaign to promote Tuscola County as a recreation destination for residents and visitors.**

- Understand the “draw”- By careful consideration of Tuscola County’s available amenities and through research of popular recreational and leisure pursuits, develop a marketing strategy to attract residents and visitors to the parks.
- Create promotional materials- Promote the attractions through proper design and placement of signs and through the development of the Park and Recreation Department’s website, Thumb Area Tourism Council and other related locations on the web.

## Section VI

# Recreation Inventory



# Recreation Inventory

## Tuscola County

The Tuscola County Recreation Inventory is a comprehensive listing of public and private recreational opportunities that are available throughout the county, including nonprofit recreational programs as well as State of Michigan facilities. When planning for future parks and recreation projects, local units of government must consider the existing recreational inventory to determine the greatest need and best investment of available resources.

As in many rural communities throughout Michigan, the school district is an important resource in providing recreational opportunities. School districts in Tuscola County provide local communities with basic playground equipment and play areas as well as an opportunity for individual and organized team activities. In several local communities, the school district and the unit of government have established a partnership to offer shared recreational opportunities for children and adults.

Table 16 represents the results of a Tuscola County Recreation Inventory that was conducted from November 2006 through February 2007. The information includes public properties / facilities, school properties / facilities, and private properties / facilities including commercial establishments. The Tuscola County Recreation Inventory table identifies the property / facility, assigns a map identification number, lists the site facilities, and records the total acreage as available.

Table 16:  
Tuscola County Recreational Properties / Facilities

### Public Recreational Properties / Facilities

Location	Name	Map ID#	Facilities Available	Acreage	Accessibility Evaluation*
<b>Tuscola County</b>					
	Vanderbilt County Park	1	BBQ Grills Camp Sites (rustic and electric hook-ups) Fire Rings Chemical Restrooms Nature Trails Pavilion Picnic Areas Playground Equipment Pump Water	17.85	2
<b>Akron Township</b>					
			None		

<b>Village of Akron</b>	6	Ball Field (1) Creek Picnic Tables Play Area Shelter Water Pumps	4	2
<b>Almer Township</b>				
Township Hall (Darbee School)	22	BBQ Grills Playground Equipment Picnic Tables	15	2
Darbee Farm Park	22	Baseball/Softball Fields Basketball Court Horseshoe Pits Nature Trails Open Play Area Pavilions Picnic Area / Tables Playground Equipment Restrooms Recreational Trails Soccer Fields Volleyball Court	40	2
AYSO Soccer Park	22	Concession Stands Meeting Place Restrooms Soccer Fields (8) Storage	8	2
Community Park	22	To Be Developed	40	1
<b>Arbela Township</b>				
Arthur Latham Park	24	Combined effort with Village of Millington, Millington and Arbela Townships Ball Fields (4) BBQ Grills Boy Scout Building Camp Sites Chemical Toilets Exercise Trail Horseshoe Pits (16) Nature Trails Picnic Tables Play Area		3

			Playground Equipment Pump Water Shelters (3) Soccer Fields Stream Access		
<b>Village of Caro</b>					
Atwood Park	9		Gazebo Benches	0.75	2
Bieth Park Tuscola County Fairgrounds	7		Arts & Crafts Facility Auditorium Baseball Fields Basketball Court BBQ Grills Drinking Fountains Exercise Course Fairgrounds Grand Stand Horse Riding Area Horseshoe Pits Horse Stables Lighted Outdoor Hockey Rink Open Play Area Pavilions Picnic Areas / Tables Playground Equipment Playgrounds Race Track Restrooms Shuffle Board Courts (4) Softball Fields Tennis Courts (5) Volleyball Courts	40	3
Chippewa Landing Park	8		BBQ Grills Boat Ramp and Dock Fishing Ice Skating Open Play Area Pavilions Picnic Areas / Tables Playground Restrooms River Walk with Pedestrian Bridge	16	3
Colonial Park	9		Open Play Area	1.5	2

Williamsburg Subdivision Park	9	Open Play Area Softball Field	1.5	2
Northwood Heights Park	9	Play Area Softball Field	1.5	2
<b>Village of Cass City</b>				
Cass City Recreation Park	10	1/4 Mile Track (leased by school) (1) Arts & Crafts Facility (with 2 restrooms) Basketball Courts (4) BBQ Grills (15) Concession Stand (leased by school) Drinking Fountains (3) Flush Toilet Restrooms (2) Football Field (leased by school) (1) Hardball Diamond (1) Horseshoe Pits (4) Multi-Purpose Court (1) Nature Trails Open Play Area Outdoor Junior Olympic Pool Pavilions (2) Picnic Tables (43) Play Equipment Sand Volleyball Court Softball Diamond (1) Softball Diamonds, Official lighted (2) Stadium Seats (300+), Press Box Swimming Pond Tennis Courts (4) Toboggan / Sled Hill	82.5	2
Cedarwood Park	11	Open Field Area Paved Basketball Court Play Equipment	2	2
Cass City Walking Trail (a railway linear park)	12	Aggregated Trail Surface Shelter	1.5 miles	1
<b>Columbia Township</b>		None		
<b>Dayton Township</b>		None		

<b>Denmark Township</b>		Assist Village of Reese with their park facilities		
<b>Elkland Township</b>		None		
<b>Ellington Township</b>		None		
<b>Elmwood Township</b>		None		
<b>Village of Fairgrove</b>				
	Fairgrove Community Park	13	Ball Fields Picnic Tables Playground Equipment Shelter	8   2
	Mulberry Park	13	Asphalt Walkway Ball Fields Building (formerly the Fairgrove Elementary School) Drinking Fountains Pavilions Picnic Area Playground Equipment Tennis Courts (2)	5+       3
<b>Fairgrove Township</b>		None		
<b>Fremont Township</b>		None		
<b>Village of Gagetown</b>				
	Village Park	14		10.5 10.5 1
<b>Gilford Township</b>		Township Park		30 1
<b>Indianfields Township</b>				
	Township Park	23	Ball Fields Boardwalk Canoe Launch Drinking Fountains Fishing Access to Cass River Horseshoes Master Gardener Garden Nature Trails Office Nature Center Pavilions (4) Picnic Area / Tables Playground Equipment Restrooms Volleyball Court	160 acres*           3
* 60 acres owned by Indianfields Township. 100 Acres owned by State Hospital.				

Bruisee Road Site	26	Picnic Sites	18	1
<b>Juniata Township</b>		None		
<b>Kingston Township</b>		None		
<b>Village of Kingston</b>				
Kingston Memorial Park	15	1/2 Basketball Court Ball Diamond BBQ Grills Open Play Area Pavilions Picnic Tables Playground Equipment Restrooms Tennis Court	5	2
<b>Koylton Township</b>		NO RESPONSE		
<b>Millington Township</b>				
Arthur Latham Park	24	Combined effort with Village of Millington, Millington and Arbela Townships Ball Fields (4) BBQ Grills Camp Sites Chemical Toilets Exercise Trail Horseshoe Pits (16) Nature Trails Picnic Tables Play Area Playground Equipment Pump Water Shelters (3) Soccer Fields Stream Access	78.3	3
Southern Links Trailway	27	Liner Park Running Through 7 Municipalities Including Three Counties		1
<b>Village of Millington</b>				
Arthur Latham Park	24	Combined effort with Village of Millington, Millington and Arbela Townships Ball Fields (4) BBQ Grills Camp Sites Chemical Toilets Exercise Trail Horseshoe Pits (16)		3

			Nature Trails Picnic Tables Play Area Playground Equipment Pump Water Shelters (3) Soccer Fields Stream Access		
	Southern Links Trailway	27	Liner Park Running Through 7 Municipalities Including Three Counties		1
<b>Village of Mayville</b>					
	Ohmer Park	17	Ball Fields Open Play Area Outdoor Pool Picnic Area / Tables Restrooms	7	3
	Bodeis Park	16	Ball Fields Open Play Area Pavilions Picnic Area / Tables Restrooms	1 (1/2 block)	2
<b>Novesta Township</b>			None		
<b>Village of Reese</b>					
	Reese Community Park	19	Ball Diamonds Basketball Court Concession Stand Picnic Area Play Area Playground Equipment Restrooms Shelter Shuffle Board Court Small Pavilion Tennis Court Water Pond	12	2
	Reese Memorial Park	18	Gazebo Open Play Area Picnic Tables Playground Equipment Restrooms	4	2

<b>Tuscola Township</b>				
Community Park	25	Ball Fields Cass River Access Closed School Building Concession Area	15	3
<b>Village of Unionville</b>				
Unionville Community Park	20	Ball Field Basketball Courts Tennis Court Drinking Fountain Ice Rink Open Play Area Picnic Area Picnic Tables Playground Restrooms Shelter	44	3
Kemp Memorial Park	21	Picnic Tables Gazebo	0.5	2
<b>Vassar Township</b>				
		Undeveloped Land	20	1
<b>City of Vassar</b>				
Harper Park	5	Basketball Court Playground	8.5	2
Hillside Park	5	Band Shell Picnic Facilities Playground	0.5	2
White Birch Park	5	Basketball Court	9	1
McKinley School Park	5	Open Play Area Playground Equipment	0.5	3
Vassar Lion's Park	5	Open Play Area Pavilions Playground Equipment	0.75	2
Vassar Riverside Park	5	Rail Trail Playground T. North Pavilion	11.09	3

Vassar Riverside RV Park	4	Boat Ramp Campsites Horseshoe Pits Picnic Facilities Playground Equipment Shelter Volleyball Court	10.7	3
Ivan Middleton Hall	4	Community Center Restrooms Shelter	4	3
Vassar Memorial Park	4	Baseball Fields Open Play Area Picnic Area Restrooms Shelter	48**	2
**Part of the Vassar Fairgrounds				
Vassar Rail Trail	4	Play Area Playground Facilities Recreation Trails Walkway	1***	3
***One mile long by 10 feet wide				
Vassar Fairgrounds	4	Basketball Court Fairgrounds Harness Racing Track Lighted Outdoor Ice Hockey Rink Playground Restrooms Shelters Softball Diamonds	48	3
<b>Watertown Township</b>				
Fostoria Park	33	Ball Fields Basketball Courts Chemical Restrooms Concession Stand Drinking Fountains Grand Stands Horseshoe Pits Ice Skating Open Play Area Pavilions Picnic Facilities	1	2

North Lake Murphy Park	28	BBQ Grills Boat Ramp Chemical Restrooms Fishing / Swimming Ice Skating Pump Water	1	2
<b>Wells Township</b>		None		
<b>Wisner Township</b>		None		

\* According to the DNR Form IC 1924 (Guidelines for the Development of Community Park, Recreation, Open Space, and Greenway Plans. Facilities are ranked on a scale of 1 to 5 with 1=none, 2=some, 3=most, 4=The entire park meets accessibility guidelines, 5=the entire park was developed/renovated using the principals of universal design

Table 16a:  
Tuscola County Recreational Properties / Facilities  
**Public School Recreational Properties / Facilities**

District	Name of School	Map ID#	Facilities Available	Acreage
<b>Akron-Fairgrove Schools</b>				
	High School & Middle School	A	1/4 Mile Track Baseball Fields (4) Basketball Courts Concession Stand Creeks / Fish / Swim Cross Country Course Drinking Fountain Playground Restrooms Soccer Field Softball Field	15-Oct
	Elementary School	A	Baseball Field Playground Equipment	5
<b>Caro Community Schools</b>				
	Main Campus Complex (High School, Middle School, and McComb Elementary School)	B	400 Meter All Weather Track Athletic Football Field Baseball Field (1) Complete Weight Room (1) Cross Country Running / Skiing Trails Football Field Gymnasiums (3) Indoor Swimming Pool Outdoor Basketball Courts (6) Picnic Area Playground Area Restrooms Shelter Soccer Fields (3) Softball Fields (3)	40
	Schall Elementary School	B	Indoor Basketball Court (1) Indoor Stage (1) Outdoor Basketball Courts (3) Picnic Tables Playground Area Soccer Field	8

		Softball / Baseball Field	
<b>Cass City Public Schools</b>			
Cass City High School	C	400 Meter Track Ball Diamonds Multi-Purpose Fields Soccer Field	80
Cass City Middle School	C	Ball Fields Basketball Court Multi-Purpose Fields Play Structure	*
*Included in high school acreage			
Campbell Elementary School	C	Basketball Hoops (4) Climber (1) Merry - go - Round (1) Play Structure (1) Swing Sets (6) Tables / Chairs (6)	2
Deford Elementary	C	Basketball Court (1) General Playground Equipment Swing Sets / Slides / Teeter Totter	3
<b>Kingston Community Schools</b>			
Kingston High School	D	1/2 Basketball Courts / Indoor Gym (6) 400 Meter Track (cinder) Baseball / Softball Fields Football Field Gymnasium Practice Field Weight Room	40**
**With extra land of 4.23 acres			
Kingston Elementary School	D	Basketball Court Outdoor (1) Basketball Courts / Gym - Indoor (2) General Playground Equipment	5.76
<b>Mayville Community Schools</b>			
Mayville High School and Middle School	E	Ball Diamonds Ball Field, Softball and Baseball Basketball Courts (3) Football Field Gym, Pavilion Playground Equipment	20
Mayville Elementary School	E	Basketball Court General Playground Equipment Junior Soccer Field Volleyball	10+
<b>Millington Community Schools</b>			
Millington High School	F	Asphalt Track	20

			Ball Fields (3) Football Field Indoor Gym Softball Field	
Meachum Junior High School	F		Baseball Fields (5) Basketball Court (1) Football Field Indoor Hoops Gym (6)	15
Kirk Elementary School	F		Basketball Court (2) Play Equipment Slide (3) Softball Field Swings (18)	6
Glaza Elementary School	F		Baseball Field General Playground Equipment Monkey Bars Play Structure Slide Softball Field Swing Sets	8
<b>Reese Public Schools</b>				
Reese High School	G		Ball Diamond Basketball Court Gymnasium Track	5
Reese Middle School	G		Basketball Courts Gymnasium Restrooms	2
Reese Elementary	G		Basketball Courts Gymnasium Restrooms	2-3
<b>Tuscola Intermediate School District</b>				
Highland Pines School	H		Indoor Gymnasium, Carpeted Indoor Swimming Pool Playground Area Soccer Field	40
Tuscola Technology Center	H		Vocational Programs	*
* Included in Highland Pines acreage				
<b>Unionville-Sebewaing Area Schools</b>				
USA High School and Middle School (located in Sebewaing Huron County)	I		Ball Fields Baseball Field (1) Concessions Building Drinking Fountain Multi-Purpose Field	36

		Restrooms Softball Field(1) Storage Facility / Press Box (1) Track / Football Field	
USA Elementary School (located in Unionville, Tuscola County)	I	Ball Diamonds Basketball Courts (2) Merry - go - Rounds (2) Play Structures (2) Slides (3) Swing Sets (3)	10
<b>Vassar Public Schools</b>			
Vassar High School	J	Ball Fields (3) Basketball Court (1) Football Field / Track (1) Soccer Field Tennis Court (1) Volleyball Court (1)	2-3
Vassar Junior High School	J	Ball Fields (3) Basketball Court (1) Football Field / Track (1) Playground Area Soccer Field Tennis Court (1) Volleyball Court (1)	**
** Included in Vassar High School acreage			
Central Elementary School	J	Basketball Court (1) Mini Soccer / Football Field Gymnasium Picnic Table Play Structure Swings	5
Townsend North Elementary	J	Basketball Court (1) Picnic Tables Slide / Swings Wooden Play Structure	***
***Included in Vassar High school acreage			

**Table 16b:  
Tuscola County Recreational Properties / Facilities  
Private School Recreational Properties / Facilities**

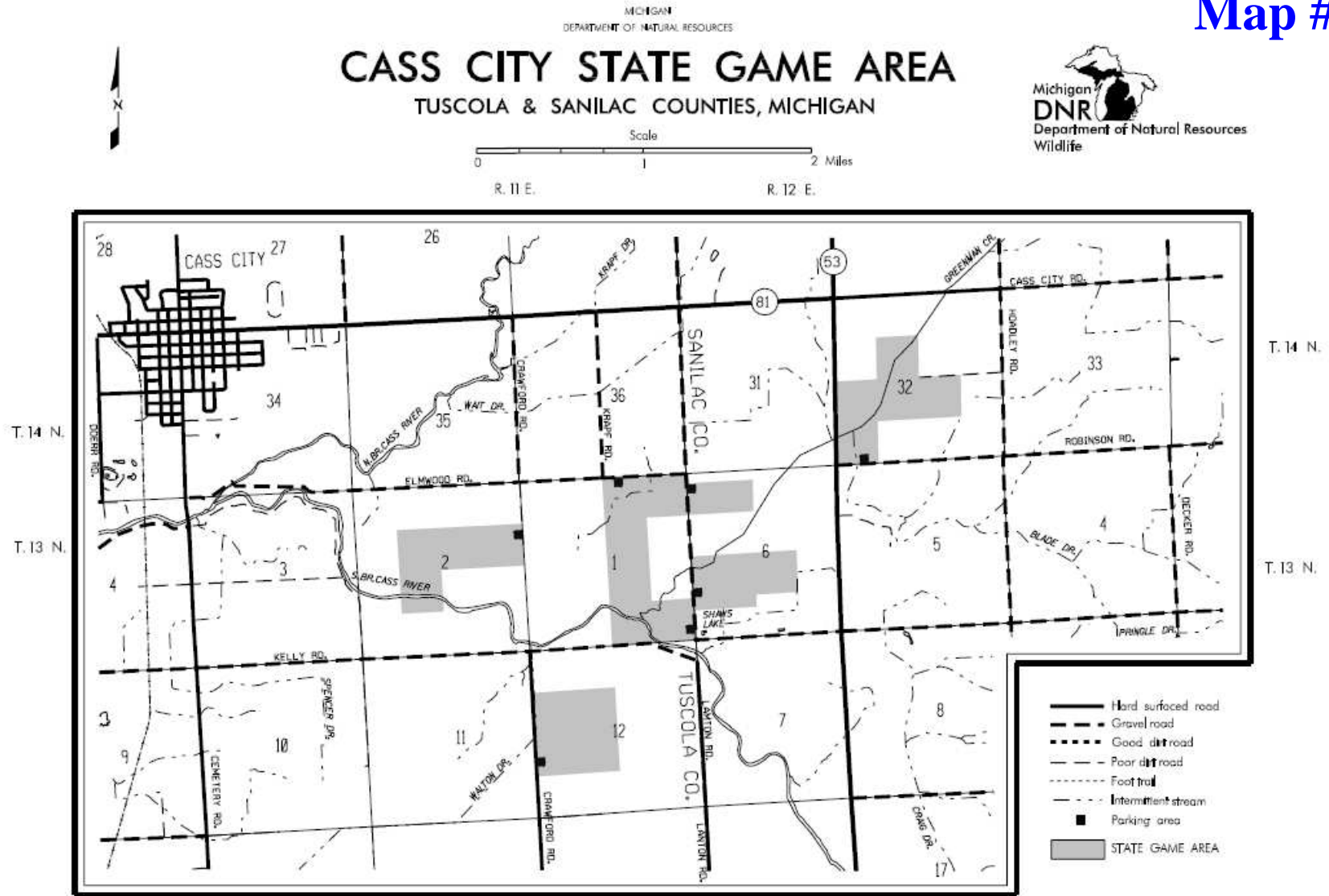
<b>Location</b>	<b>Name of School</b>	<b>Map ID#</b>	<b>Facilities Available</b>	<b>Acreage</b>
<b>Deford</b>	Deford Christian Academy	K	Playground Equipment Gymnasium Outdoor Basketball Court Soccer Field	2
<b>Mayville</b>	Juniata Christian School	L	Ball Field (1) Playground Equipment Gymnasium Soccer Field (1)	15
<b>Millington</b>	St. Paul Lutheran School	M	Basketball Court Play Structure Slides Soccer Field	N/A
<b>Reese</b>	St. Elizabeth's Catholic Elementary School	G	Basketball Gymnasium Restrooms	1 City Block
	Trinity Lutheran	G	Basketball Gymnasium Restrooms	2
<b>Richville</b>	St. Michael's Lutheran School	N	Ball Fields (1) Basketball Courts (4) Playground Equipment Multi-Purpose Fields Pavilion Picnic Tables (2) Soccer Field (1) Volleyball Court (1)	
<b>Sebewaing</b>	New Salem Lutheran School	O	Basketball Hoop Playground Equipment	(On School Grounds)
<b>Unionville</b>				

	Christ the King Lutheran School	P	Open Play Field	
	Ministry of the Word	P	Playground Equipment	10-12
<b>Vassar</b>	St. Luke's Lutheran School	Q	N/A	N/A

Table 16c:  
Tuscola County Recreational Properties / Facilities  
**State of Michigan Recreational Properties / Facilities**

Location	Name of Facility	Map ID#	Facilities Available	Acreage
<b>Cass City</b>	Cass City State Game Area Map #1	29	Intermittent Stream Nature Trails Riverfront Property	1210*
	*440 acres in Tuscola County; 770 acres in Sanilac County			
<b>Deford</b>	Deford State Game Area Map #2	30	Forest / Game Area Foot Trails Intermittent Stream Riverfront Property	9,607
	Fish Point State Game Area Map #3a and 3b	31	Nature Trails Saginaw Bay	3076
<b>Millington</b>	Murphy Lake State Game Area Map #4	28	Boat Launch Land and Intermittent Stream Nature Trails Riverfront Property	2560
	Tuscola State Game Area Map #5	26	Forest / Game Area Foot Trails	8383
	Vassar State Game Area Map #6	32	Forest / Game Area Foot Trails Intermittent Stream	3058
	Clark Park A State Roadside Park	2	Picnic Grounds	
	Enos Park A State Roadside Park	3	Picnic Grounds	
	Saginaw Bay Boat Launches	n/a	Trailer Launch	

# Map #1

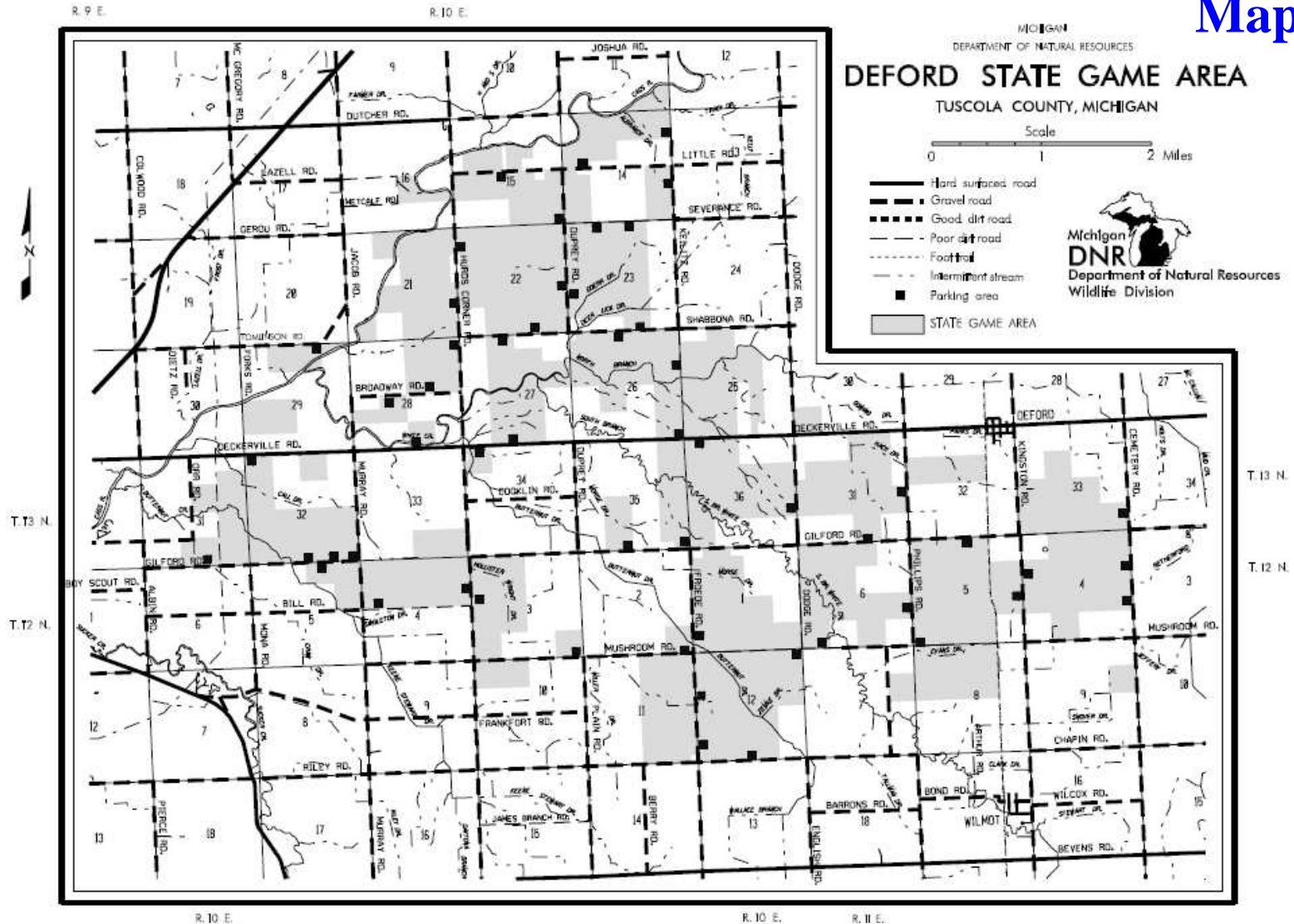


### Hunter Monies Made This Area Possible

DNR-Wildlife Map 0801 ( Rev. 7/2001 -MLS )



# Map #2



Hunter Monies Made This Area Possible

A/E - Rev. 6/98 MAP 0803



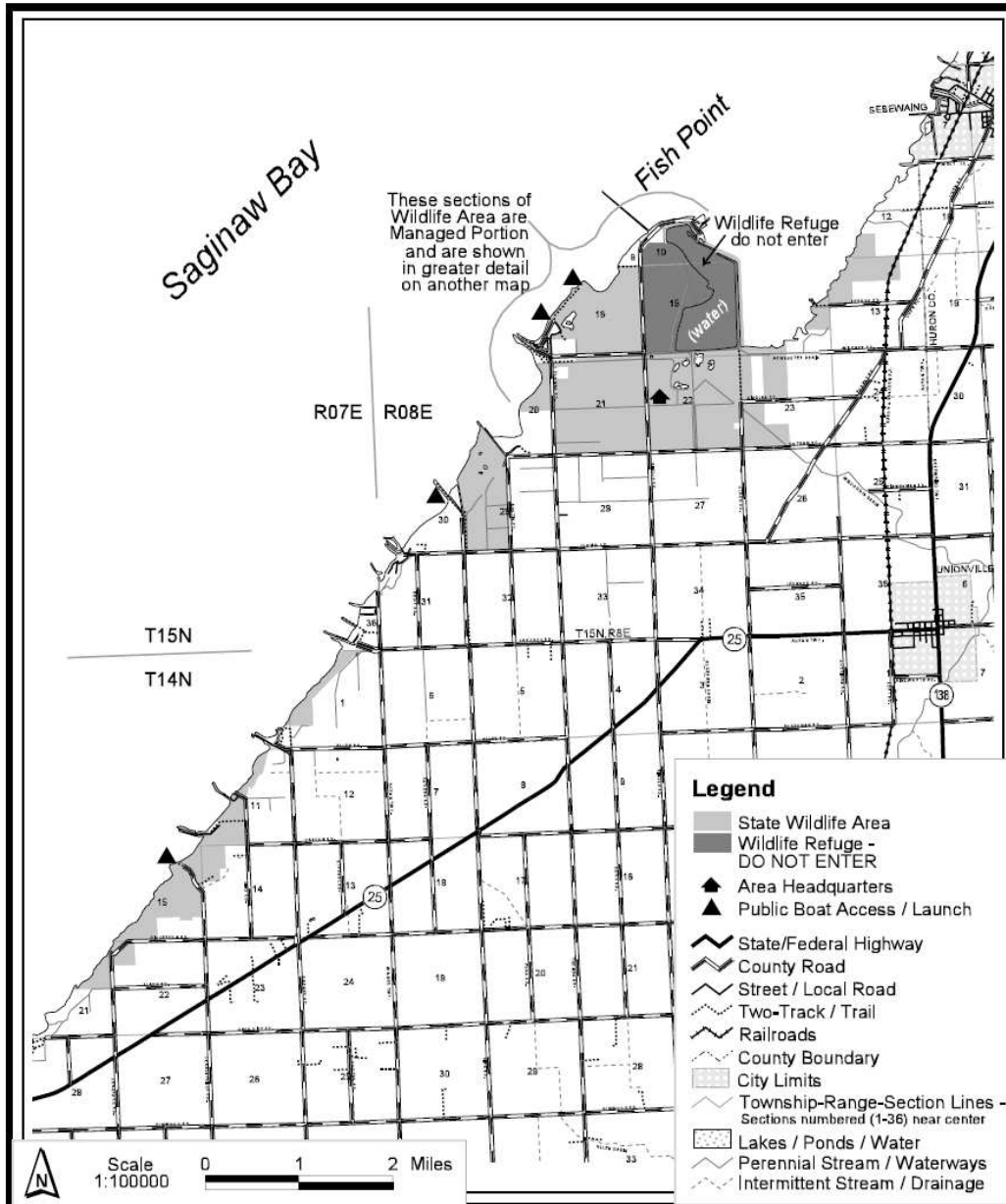
# Map #3



MICHIGAN  
DEPARTMENT OF NATURAL RESOURCES

## FISH POINT STATE WILDLIFE AREA GENERAL OVERVIEW OF WILDLIFE AREA TUSCOLA COUNTY, MICHIGAN

Great Lakes,  
Great Times,  
Great Outdoors  
[www.michigan.gov/dnr](http://www.michigan.gov/dnr)



Portions of this area designated  
Watchable Wildlife viewing areas.

For more information on this and other areas,  
contact DNR offices or visit the internet at:  
<http://www.michigan.gov/dnr>

### Hunter Monies Made This Area Possible

DNR-Wildlife Map - area 790201 (was 0805) Rev. 8/2006 - MLS

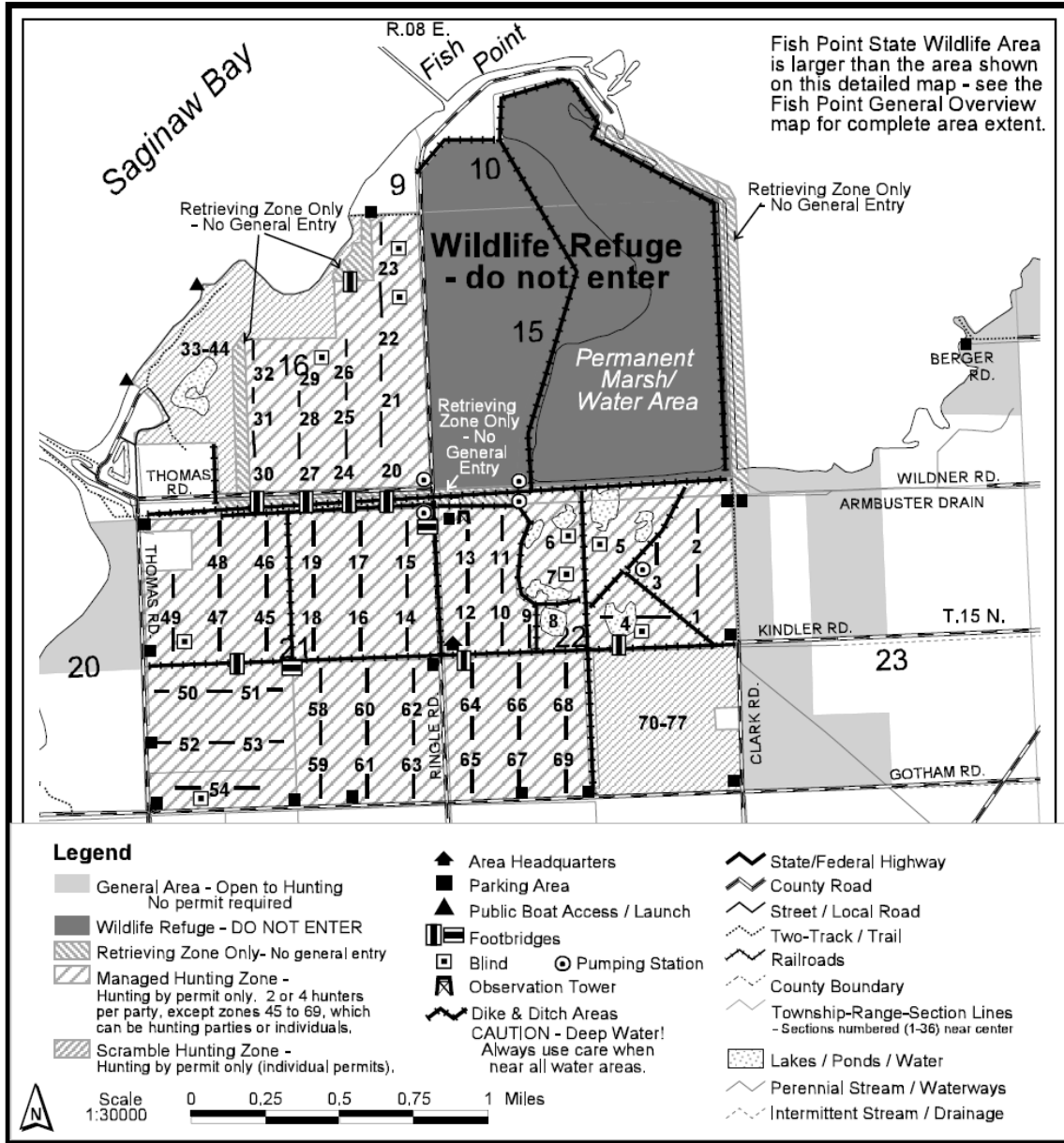


# Map #3b



MICHIGAN  
DEPARTMENT OF NATURAL RESOURCES  
**FISH POINT STATE WILDLIFE AREA**  
MANAGED PORTION OF WILDLIFE AREA  
TUSCOLA COUNTY, MICHIGAN

Great Lakes,  
Great Times,  
Great Outdoors  
[www.michigan.gov/dnr](http://www.michigan.gov/dnr)



Portions of this area designated Watchable Wildlife viewing areas.

For more information on this and other areas, contact DNR offices or visit on the internet at: <http://www.michigan.gov/dnr>



## Hunter Monies Made This Area Possible

DNR-Wildlife Map - area 790202 (was 0804) Rev. 8/2006 -MLS



MICHIGAN  
DEPARTMENT OF NATURAL RESOURCES

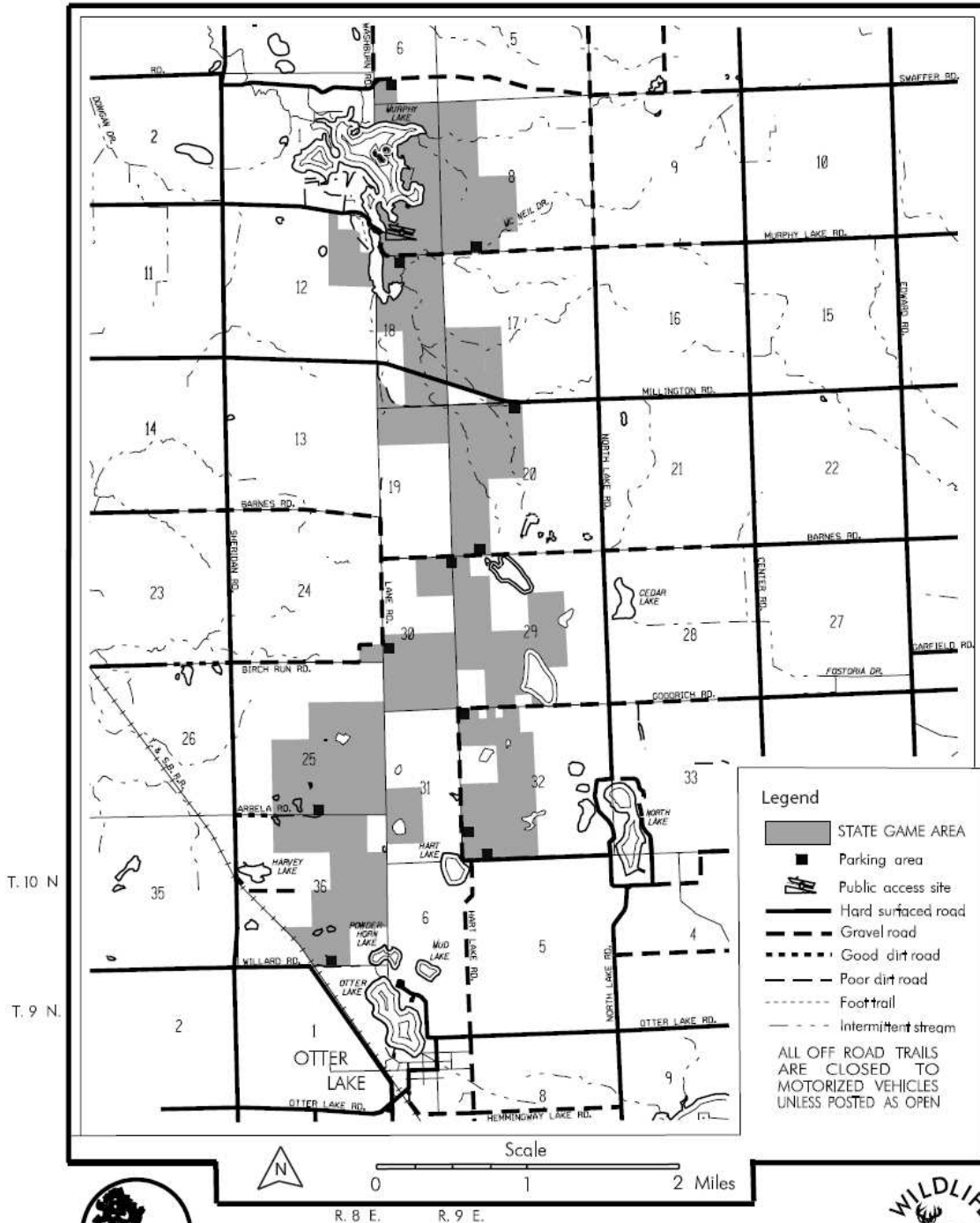
# MURPHY LAKE STATE GAME AREA

TUSCOLA COUNTY, MICHIGAN

## Map #4

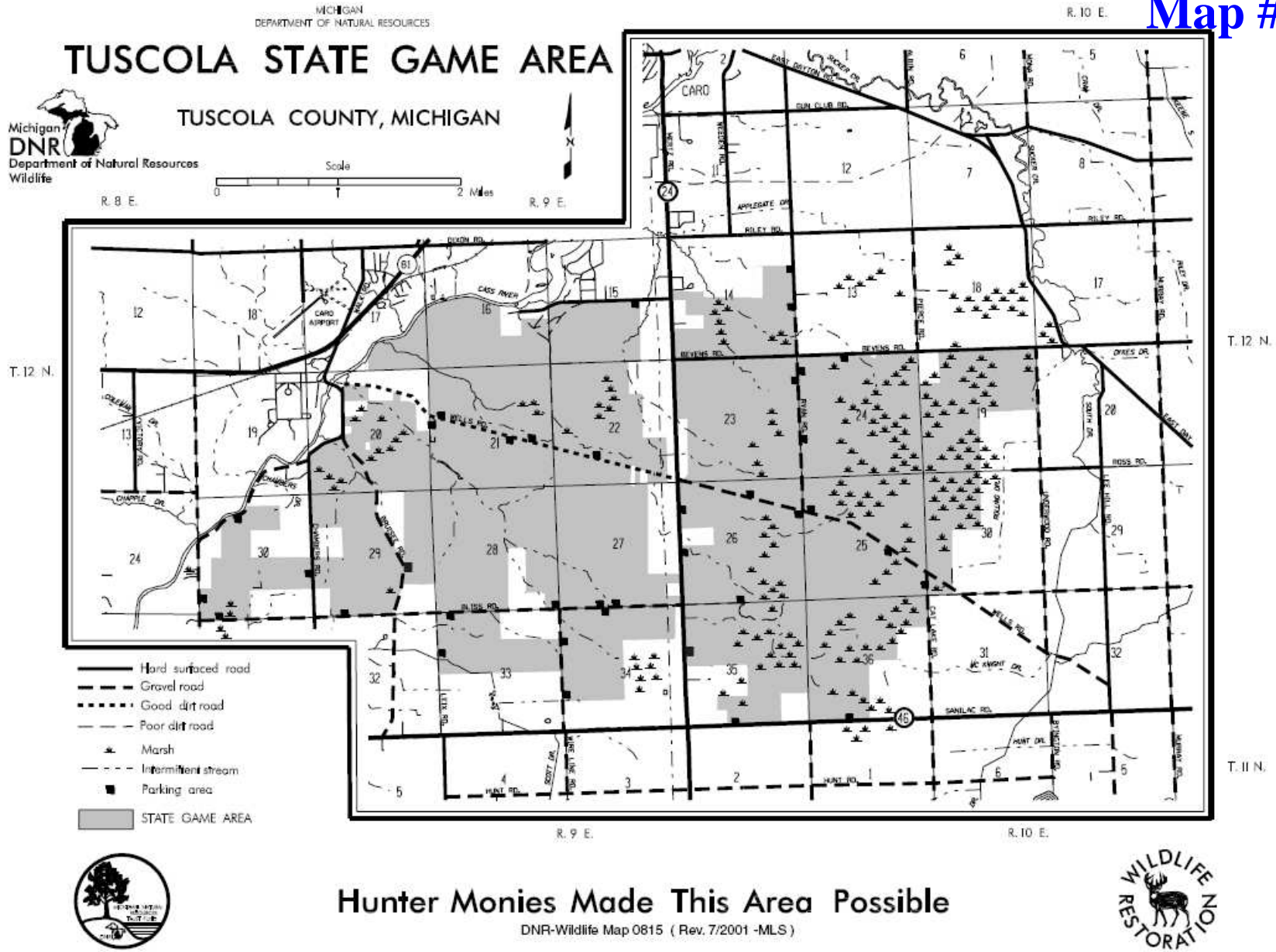
Great Lakes,  
Great Times,  
Great Outdoors!  
[www.michigan.gov/dnr](http://www.michigan.gov/dnr)

R. 8 E. R. 9 E.



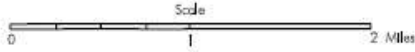
**Hunter Monies Made This Area Possible**  
DNR-Wildlife Map - area 790601 (was 0819) Rev. 9/2005 -MLS





Map #6

MICHIGAN  
DEPARTMENT OF NATURAL RESOURCES  
**VASSAR STATE GAME AREA**  
TUSCOLA COUNTY, MICHIGAN



R. 8 E.

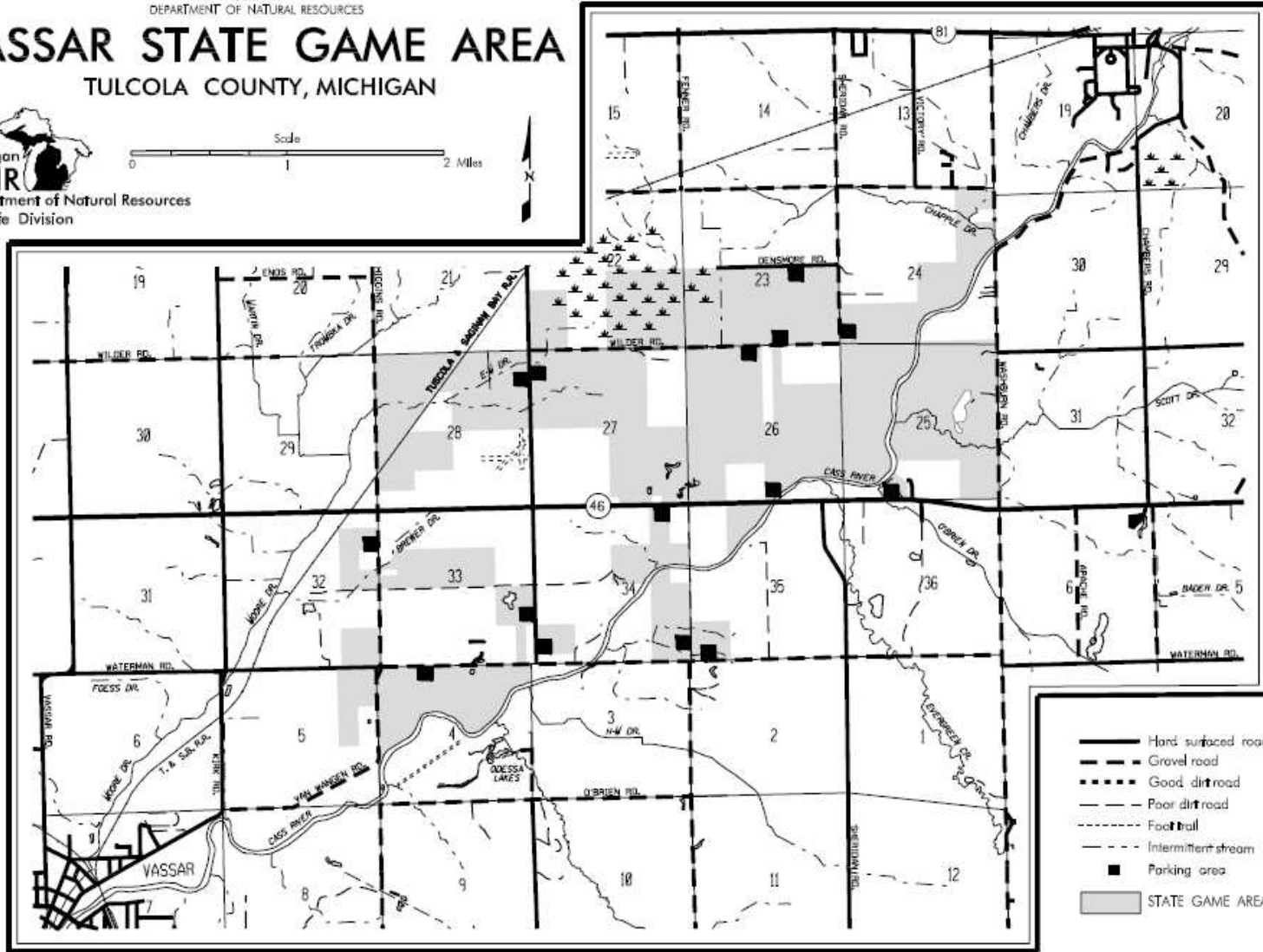
R. 9 E.

T. 12 N.

T. 12 N.

T. 11 N.

T. 11 N.



- Hard surfaced road
- - - Gravel road
- · - · - Good dirt road
- · - - - Poor dirt road
- · - - - Foot trail
- · - - - Intermittent stream
- Parking area
- ▭ STATE GAME AREA

R. 8 E.

**Hunter Monies Made This Area Possible**

AJE - Rev. 7/97 MAP 08T6



Table 16d:  
Tuscola County Recreational Properties / Facilities  
**Commercial and Other Recreational Properties / Facilities**

Location	Name of Facility	Facilities Available
<b>Akron Area</b>		
	Akron Country Lanes	Bowling Alley Restrooms
<b>Caro Area</b>		
	Arrowhead Golf / Country Club	Public Golf Course (18 holes) Restrooms Shelter
	Brentwood	Bowling Alley Restrooms
	Caro Golf Club	Public Golf Course (9 holes) Restrooms Shelter
	Caro Gun Club	Club House Cross Country Skiing Meeting Facility Pistol Range Recreational Trails Restrooms Rifle Range Skeet Shooting Ranges (2) Trap Shooting Ranges (3)
	Fore Corners Golf Center	Miniature Golf Driving Range Restrooms
	Knights of Columbus	Ball Fields Concession Stand Drinking Fountains Meeting Facility Picnic Area Pump Water Restrooms
<b>Cass City Area</b>		
	Charmont	Bowling Alley Restrooms

Cass City Gun Club	Meeting Facility Skeet and Trap Shooting Softball Diamond Swimming Pond
Mulligan's Irish Links	Public Golf Course (9 holes) Restrooms Shelter
<b>Gagetown Area</b>	
Sherwood on the Hill	Public Golf Course (9 holes) Restrooms Shelter
<b>Juniata Township</b>	
Vassar Golf / Country Club	Public Golf Course (18 holes) Restrooms Shelter
<b>Mayville Area</b>	
Fowler Center	Basketball Hoops Beach Nature Trails Soccer Field
Greenbrier Golf Club	Public Golf Course (18 holes) Driving Range Restrooms Shelter
Triangle Lanes	Bowling Alley Restrooms
<b>Reese Area</b>	
Country Club of Reese	Public Golf Course (9 holes) Restrooms Shelter
Karp's Bowling Bar	Bowling Alley Restrooms
<b>Tuscola Area</b>	
Timbers Golf	Public Golf Course (18 holes) Driving Range Restrooms Shelter
<b>Unionville Area</b>	
American Legion Bowling Lanes	Bowling Alley

Restrooms	
<b>Vassar Area</b>	
Hilltop Recreation	Bowling Alley
Wesleyan Woods	Campground
Willow Springs	Public Golf Course (18 holes)
	Restrooms
	Shelter

## Recreation Inventory

### Surrounding Communities

Tuscola County is one of four counties that comprise the “Thumb” area of east central Michigan. A description of parks and recreation opportunities available in Huron, Lapeer, and Sanilac Counties is provided in the tables that follow.

Table 17:  
Huron County Recreation Inventory - City Parks

Location	Name of Park	Facilities Available
<b>Bad Axe</b>	Bad Axe City Park	Baseball, softball, and soccer fields Basketball courts Pavilion Picnic areas
	Wilcox Community Park	Community center Picnic area Playground equipment Sand volleyball court Toboggan hill
<b>Harbor Beach</b>	Bathing Beach Park	Concessions Picnic area Playground Restrooms Sandy beach Trescott Pier (1,015 feet) Volleyball nets

Davidson Park	Basketball court Pavilion Picnic area Playground Restrooms Tennis court
North Park Campground	184 campsites (electric, sewer, and water on all sites) Basketball court Horseshoes Pavilion Picnic area Playground Restrooms with showers Softball fields
Waterworks Park (adjacent to municipal marina)	Pavilions Picnic area Playground

Table 17b:  
Huron County Recreation Inventory - County Parks

Location	Name of Facility	Facilities Available	Acreage
<b>Caseville</b>	Caseville County Park	214 sites Bathhouse Concession Fishing Picnic area Shelters Swimming Trailer camping	40
	Philp County Park	Picnic area Swimming	2
<b>Harbor Beach</b>	Wagener County Park	63 sites Boat launch	130

		Camping cabins (rustic) Fishing Hiking trail Nature study area Picnic area Play equipment Shelter Ski trail Tent and trailer camping	
<b>Port Austin</b>			
	Bird Creek County Park	Fishing Picnic area Swimming Shelter	7
	Lighthouse County Park	110 sites Boat ramp Camping cabins Fishing Hiking Historic sites Nature study area Picnic area Play equipment Ski trail Swimming Trailer Camping	120
	McGraw County Park	Bathhouse Picnic area Swimming	7
	Oak Beach County Park	56 sites Fishing Picnic area Shelters Swimming Trailer Camping	38
<b>Port Hope</b>			
	Stafford County Park	72 sites Boat ramp Fishing Historic site Picnic areas Play equipment Shelters Tent and Trailer Camping	38

<b>Sebewaing</b>	Sebewaing County Park	64 sites Fishing Hiking Tent and Trailer Camping	20
------------------	-----------------------	---	----

Table 17c:  
Huron County Recreation Inventory - State Parks

Location	Name of Park	Facilities Available
<b>Caseville</b>	Sleeper State Park	223 campsites Bath facilities Cross country ski trail Fishing Hunting Picnic facilities Swimming
<b>Port Austin</b>	Port Crescent State Park	Three miles of shoreline 138 campsites Bath Facilities Cross county ski trail Fishing Hiking trail Hunting Picnic facilities Swimming

Table 18:  
Lapeer County Recreation Inventory - County Parks

Location	Name of Facility	Facilities Available
<b>Dryden</b>	General Squire Park	Baseball diamond Cross country ski trail Fishing Nature trails Picnic area Restrooms Sledding
<b>Lapeer</b>	Torzewski County Park	Amphitheater programs Ball diamond Boat rental Children's play pool Fishing Nature trails Pavilions Picnic area Water slides (for all ages)
		Showers Snowmobiling

Table 18a:  
Lapeer County Recreation Inventory - State Parks

Location	Name of Facility	Facilities Available
<b>Metamora</b>	Metamora-Hadley Recreation Area	Beach Beach concession Campground store Camping Cross country skiing Hiking trails Mini-cabins Picnic area Picnic shelter Restrooms

Table 18b:  
Lapeer County Recreational Properties / Facilities: State Game Areas

Location	Name of Facility	Facilities Available	Acreage
	Lapeer State Game Area *Throughout Lapeer County		13,000*

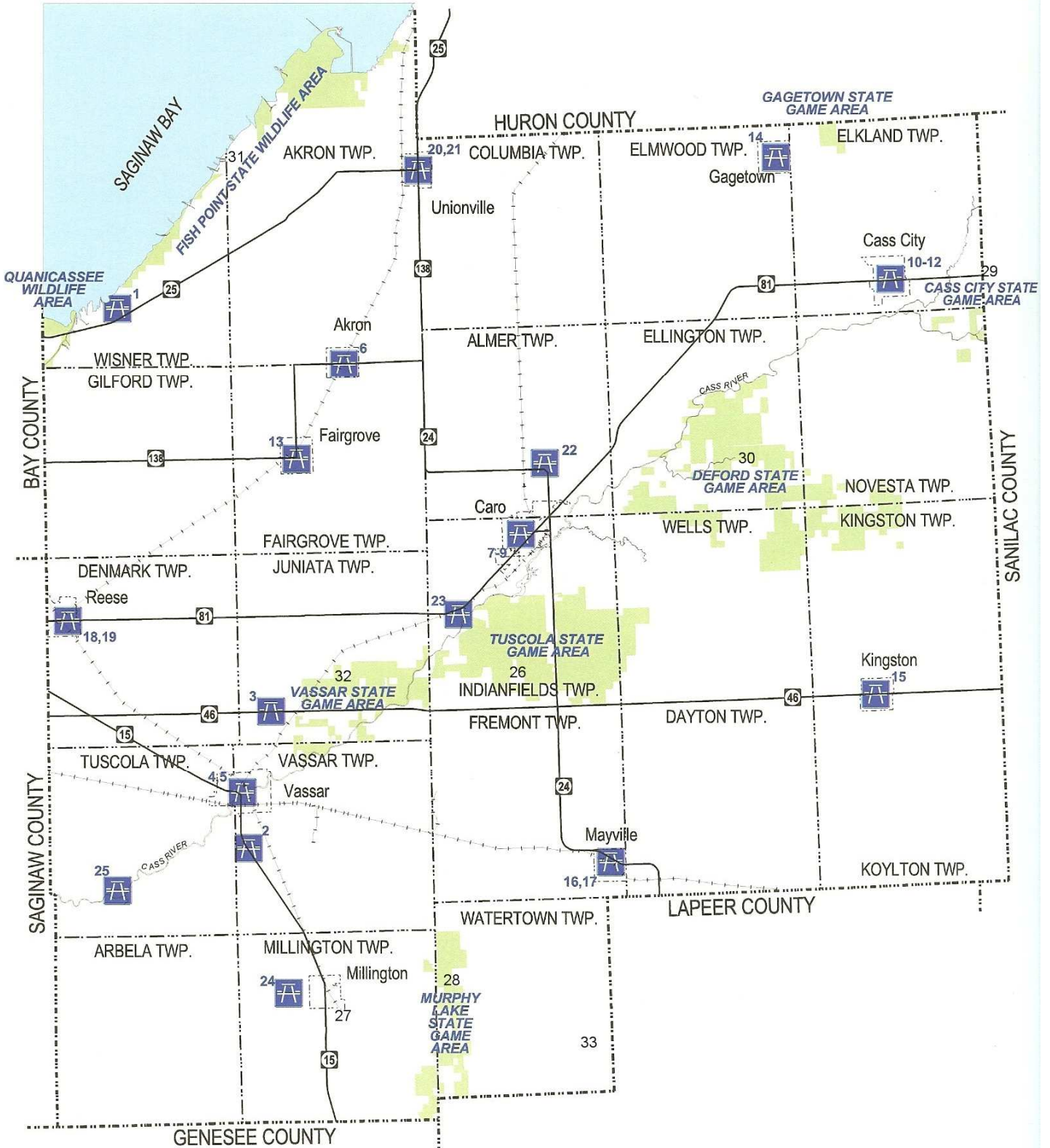
Table 19:  
Sanilac County Recreation Inventory - County Parks

Location	Name of Facility	Facilities Available	Acreage
<b>Deckerville</b>	Delaware Park	19 rustic sites Nature trails Swimming	111
<b>Marlette</b>	Evergreen Park	Driving and walking trails Picnic area	30
<b>Port Sanilac</b>	Forester Park	145 sites Ball field Nature trails Park store Picnic pavilions Playground equipment Shower building Swimming beach	68

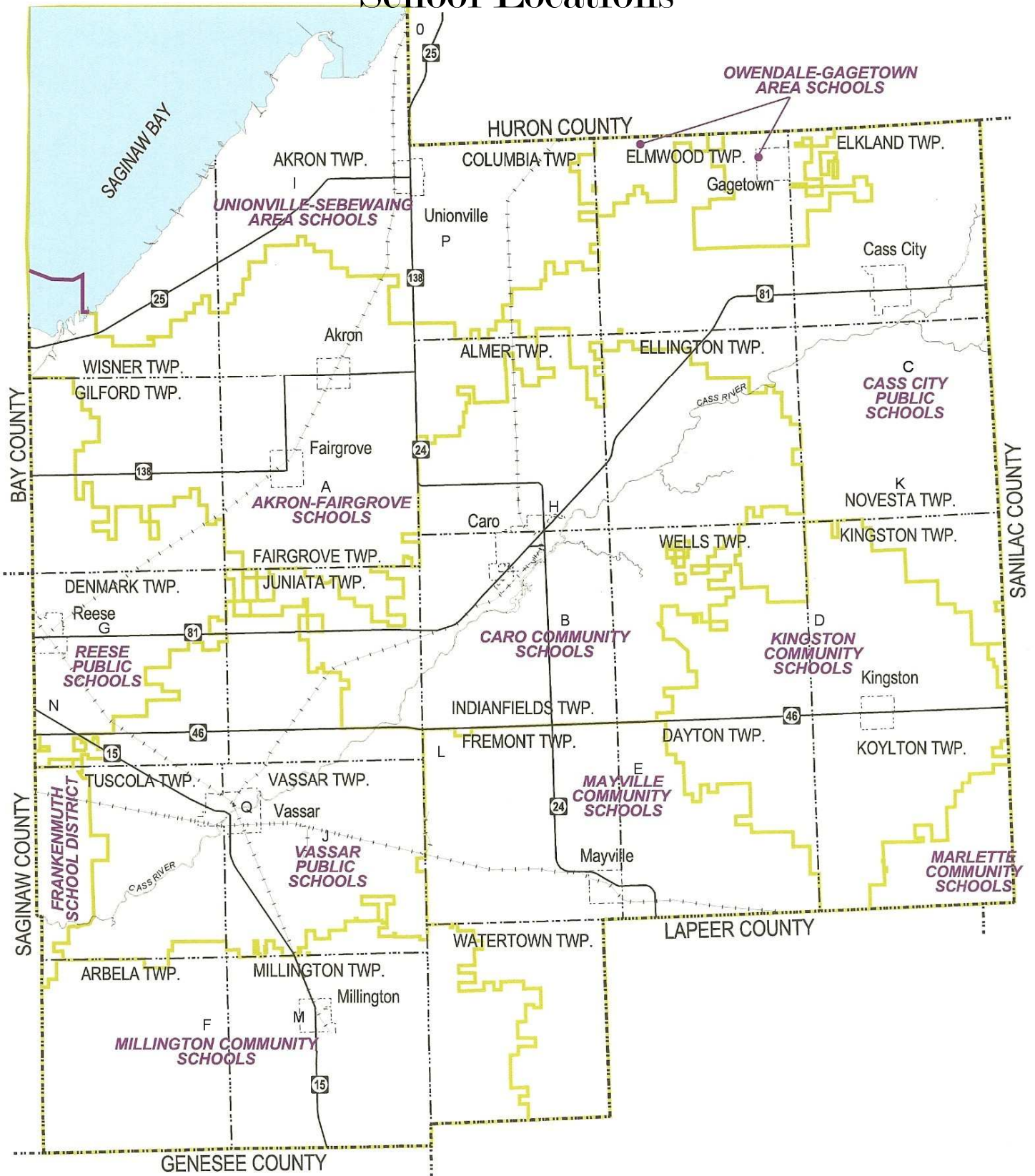
Table 19a:  
Sanilac County Recreational Properties / Facilities: State Game Areas

Location	Name of Facility	Facilities Available	Acreage
<b>Cass City</b>	Cass City State Game Area *Covers 700 acres in Sanilac County and another 400 acres in Tuscola County		1,100*
	Minden City State Game Area *Covers over 6,000 acres in Argyle, Austin, Minden, and Wheatland Townships		6,000*
	Sanilac State Game Area *Covers approximately 900 acres in Greenleaf Township		~900*

# Tuscola County – Recreational Opportunities Map Location



# Tuscola County – Recreational Opportunities School Locations



## Grant Inventory

**Tuscola County**  
**Tuscola County Recreation Grant Inventory**  
**Project Awarded to Tuscola County**

Project Number	Project Year	Project Title	Project Information	Project Status
BF89-357	1989	Vanderbilt Park Improvements	Project included:	Closed
			• Drive and Parking	
			• Shelter	
			• Camping Improvements	

**Communities within Tuscola County**  
**Tuscola County Recreation Grant Inventory**  
**Project Awarded to Tuscola County**

Local Community	Project Number	Project Title	Project Costs
Akron, Village of	26-00826	Akron Village Park	\$8,663.58
Caro, Village of	26-00932	Beith Park	\$17,633.48
Caro, Village of	26-01237	Chippewa Landing Park	\$14,096.00
Cass City, Village of	26-01104P	Cass City Recreation Facilities	\$30,973.78
Indianfields Township	26-01060D1	Indianfields Township Park	\$12,153.44
Indianfields Township	26-01415	Indianfields Township Park	\$20,406.00
Kingston, Village of	26-01104Z1	Kingston Memory Park	\$11,584.00
Reese, Village of	26-00256	Reese Community Park	\$38,079.57
Reese, Village of	26-00969	Reese Community Park	\$12,087.60
Reese, Village of	26-01125	Reese Park Development	\$17,617.73
Unionville, Village of	26-01104B1	Unionville Park	\$16,143.42
Unionville, Village of	26-01645	Unionville Village Park-Multi User	\$109,500.00
Vassar, City of	26-01060E1	Fairgrounds Park	\$7,551.75
Vassar, City of	26-01023B3	Riverfront Park	\$30,217.80
Vassar, City of	26-01131	Vassar Riverfront Park, Phase II	\$11,718.31
Watertown Township	26-01023B4	Heritage Park	\$7,708.60
Watertown Township	26-01409	Heritage Lookingglass Valley	\$40,807.00
Wells Township	26-01105	Wells Township Recreation Complex	\$32,504.87
Wells Township	26-01288	Soo Hill Recreation Area	\$4,682.56

## Section VII

# Action Plan



## Action Program

### Basis for the Action Program

The Tuscola County Planning Commission engaged in two methods of public input in determining the community’s recreational needs and possible projects. The volunteer sub-committee formed for the update of the Tuscola County Recreation Plan met occasionally to discuss and review the recreational needs of the County. Secondly, a letter was sent to all of the municipal jurisdictions, major businesses and agencies including volunteer groups and non-profit agencies asking about future potential projects. An evaluation of all these collected projects was then done with the Michigan Department of Natural Resource Standards for the community demographics to prioritize the projects. Current status of the projects, funding and community needs were closely analyzed in coherence with the standards.

Table 20:  
Action Plan and Capital Improvement Schedule

Year	Action Goal	Tasks	Estimated Cost	Funding Source	Completion Date
Year One, Priority One	<b>1. Improve the physical appearance, public viability, and increase camping facilities of Vanderbilt County Park</b>	<ul style="list-style-type: none"> <li>•Replace worn or damaged rail ties</li> <li>•Develop plan to address routine maintenance and needed improvements at the county park.</li> <li>•Develop marketing strategy (print, radio, and direct mail) to promote the county park.</li> <li>•Develop promotional materials (brochure, paycheck inserts) to promote the county park.</li> <li>•Evaluate the county park for barrier-free accessibility and implement corrective action plan accordingly.</li> <li>•Improve the quality of the available rustic sites.</li> <li>•Provide infrastructure improvements to the facilities to include a bathhouse, water, etc.</li> <li>•Develop the parks day use facilities including playground improvements, parking, and additional play areas.</li> <li>•Provide overall improvements of camping facilities for barrier free accessibility.</li> <li>•Construct new sign for the park entrance.</li> <li>•Install Speed Limit signs.</li> <li>•Install Watch for Pedestrians signs.</li> </ul>	Total Project: \$500,000.00	Tuscola County and the Michigan Natural Resources Trust Fund	2007

<p>•Install Handicap Parking signs.</p>	
<p><b>Year One, Priority Two</b></p>	<p><b>2. Offer non-financial support to the Akron Village Parks and Recreation Committee on the construction of the Veteran's Memorial and other improvements to the park in Akron to improve the appearance and public viability of the park.</b></p> <p style="text-align: right;">Total Project: 2010 \$50,000.00</p> <p>•Construction of various improvements to the park including the addition of a new larger pavilion, shrubs and flowers added to the Veteran's Memorial, new playground equipment, a new bridge walk to go from the park and parking area to replace an ageing bridge that is currently in place, as well as adding additional ornamental trees and other to provide for wildlife food sources.</p>
<p><b>Year One, Priority Three</b></p>	<p><b>3. Offer non-financial support to the Thumb Octagon Barn's construction of the powerhouse featuring an operational steam-fired generator in the powerhouse for demonstrational purposes.</b></p> <p style="text-align: right;">Total Project: 2010 \$36,100.00</p> <p style="text-align: right;">Grant funding: \$32,100.00 Volunteer Labor (Matching funds) \$4,000.00</p> <p>•The powerhouse epitomizes the entrepreneurial nature of the original owner, James Purdy. His goal was to generate enough electricity to provide power to not only his farm, but the nearby village of Gagetown as well. Once this project is completed, the powerhouse will offer educational opportunities to tell the story of the Thumb Octagon Barn and electrification of rural communities.</p>
<p><b>Year One, Priority Four</b></p>	<p><b>4. Offer non-financial support to the Thumb Area Tourism Council in their efforts to develop a central resource to promote tourism and business promotion in Tuscola County.</b></p> <p style="text-align: right;">Total Project: 2009 \$45,000.00</p> <p>•Create a database inventory and interactive user friendly website to promote local businesses on the local, regional and statewide level.</p>
<p><b>Year One, Priority Five</b></p>	<p><b>5. Offer non-financial support to the Tuscola Intermediate School District (TISD) and the Fowler Center in an effort to provide the residents of Tuscola County with structured nature areas for the study and enjoyment of outdoor recreation, environmental issues and nature appreciation</b></p> <p style="text-align: right;">Total Project: Department of Natural Resources and the Fowler Center \$185,000.00 September 2007</p> <p>The Tuscola County Board of Commissioners, through the 2007-2012 Tuscola County Parks and Recreation Master Plan, offers non-financial support for the following primary tasks relative to the TISD's project at the Fowler Center.</p>

	<ul style="list-style-type: none"> <li>•To establish a long-term lease for an easement that provides access to the wetlands at the Fowler Center</li> <li>•To develop a TISD barrier-free wetland nature trail for environmental education for Tuscola County students and community access.</li> <li>•To strengthen the county's environmental and recreation education opportunities through the Fowler Center project.</li> <li>•To bring traditional and special needs students together for outdoor recreational activities.</li> </ul>			
<p><b>Year One and Two, Priority Six</b></p>	<p><b>6. Offer non-financial support to the Southern Links Trailway Management Council in an effort to provide area residents with a converted rail trail that spans three counties, including Tuscola County.</b></p> <table border="0"> <tr> <td>Upwards of \$3.0 to \$3.5 million</td> <td>Michigan Department of Transportation</td> <td>May 2012</td> </tr> </table> <p>The Tuscola County Board of Commissioners, through the 2007-2012 Tuscola County Parks and Recreation Plan, offers non-financial support for the following primary tasks relative to the development of a discontinued rail corridor in Millington Township that is presently owned by the Southern Links Trailway Management Council.</p> <ul style="list-style-type: none"> <li>•To support the creation of a bike trail network within Millington Township. The proposed bike trail would connect existing recreational facilities as well as other focal points within the township.</li> <li>•To extend the bike trail from Arthur Latham Memorial Park through the Village of Millington, and then run alongside a discontinued rail road right-of-way to the Murphy Lake State Game Area.</li> <li>•To continue providing non-financial support as the project expands into Genesee and Lapeer Counties.</li> </ul>	Upwards of \$3.0 to \$3.5 million	Michigan Department of Transportation	May 2012
Upwards of \$3.0 to \$3.5 million	Michigan Department of Transportation	May 2012		
<p><b>Years One and Two, Priority Seven</b></p>	<p><b>7. Offer non-financial support to local units of government that want to develop or expand local parks and recreation capacity.</b></p> <table border="0"> <tr> <td>Total Project: \$100.00</td> <td>Tuscola County</td> <td>May 2012</td> </tr> </table> <ul style="list-style-type: none"> <li>•Determine effective means of communication with local units of government.</li> <li>•Develop policy reference for the Tuscola County Board of Commissioners to use to support local parks and recreation projects.</li> <li>•Convey policy to local units of government annually.</li> <li>•Track local parks and recreation initiatives (development and expansion) to ensure access of non-financial support by the Tuscola County Board of Commissioners.</li> </ul>	Total Project: \$100.00	Tuscola County	May 2012
Total Project: \$100.00	Tuscola County	May 2012		
<p><b>Year Two, Priority</b></p>	<p><b>8. Offer non-financial support to the Millington-Arbela Parks and Recreation Commission to improve the appearance and public viability of Arthur Latham Park.</b></p>			

<b>Eight</b>		Total Project: \$250,000.00	Michigan Natural Resources Trust Fund - 75% Grant (\$187,500.00) 25% Local Match (\$62,500.00)	2008
<ul style="list-style-type: none"> <li>•Construct various improvements to the park including a playscape, badminton court, message board, fencing around the property, a volleyball court and a soccer field concession stand.</li> </ul>				
<b>Year Three, Priority Nine</b>	<b>9. Offer non-financial support to the Village of Mayville on the construction of a bike path.</b>	Total Project: TBD	TBD	2011
<ul style="list-style-type: none"> <li>•Construction of bike path enhancements to be improved throughout the village.</li> </ul>				
<b>Year Three, Priority Ten</b>	<b>10. Offer non-financial support to the Caro Youth Football activities program.</b>	Total Project: TBD	TBD	2012
<ul style="list-style-type: none"> <li>•Enhance after school activities and make improvements to the football fields.</li> </ul>				
<b>Year Three, Priority Five</b>	<b>4. Construct a wildlife interpretive walkway at Vanderbilt County Park that is handicap accessible.</b>	Total Project: \$100,000.00	Michigan Natural Resources Trust Fund - 75% Grant Tuscola County - 25% Match	2012
<ul style="list-style-type: none"> <li>•Research examples of interpretive walkways projects in neighboring counties.</li> <li>•Schedule site visits to existing walkway projects to aid in developing project parameters (dimensions, accessibility, engineers, local support, financial packaging).</li> <li>•Determine preliminary scope of the project (dimensions, accessibility).</li> <li>•Research available funding resources and develop relationship with potential invertors.</li> <li>•Obtain financial commitment and non-financial support from the Tuscola County Board of Commissioners.</li> <li>•Hire an engineering firm to prepare bid specifications.</li> <li>•Release bid package.</li> <li>•Host bidders' conference to address project specific questions.</li> <li>•Apply for grant funding to support the project in whole or in part.</li> <li>•Review and recommendation of bid proposals by the Tuscola County Parks and Recreation Commission (contingent on receipt of grant funding).</li> </ul>				

•Acceptance of bid by the Tuscola County Board of Commissioners.

<p><b>Year Four, Priority Six</b></p>	<p><b>5. Identify and connect rail trails (when possible) throughout Tuscola County to promote recreational activities such as bicycling, jogging, and walking.</b></p>	<p>Total Project: \$80,000.00 (one small to medium size project)</p>	<p>Michigan Natural Resources Trust Fund - 60% Grant Tuscola County - 40% Match</p>	<p>2012</p>
<ul style="list-style-type: none"> <li>•Identify and plot discontinued rail trails throughout Tuscola County.</li> <li>•Determine preliminary scope of the project (starting point, property owners).</li> <li>•Research available funding resources and develop relationship with potential investors.</li> <li>•Determine interest in and ability of local township / village to contribute to the linear park (rail trail) project costs.</li> <li>•Obtain financial commitment and / or non financial support from the Tuscola County Board of Commissioners for the project.</li> <li>•Approach the railroad company and request discontinued rail trails be deeded to the Tuscola County Board of Commissioners (pending board approval).</li> <li>•Apply for grant funding to support the project in whole or in part.</li> </ul>				
<p><b>Year Five, Priority Seven</b></p>	<p><b>6. Increase the number of parks owned and operated by the Tuscola County Board of Commissioners from one (Vanderbilt County Park and Campground) to two.</b></p>	<p>Total project: \$200,000.00 (~40 acres @ \$4,500.00)</p>	<p>Michigan Natural Resources Trust Fund or Land &amp; Water Conservation fund-50% Grant Tuscola County - 50% Match</p>	<p>2012</p>
<ul style="list-style-type: none"> <li>•Explore land acquisition possibilities, especially in the southern half of the county.</li> <li>•Determine preliminary scope of the project (acreage, inventory needs [soccer fields, tennis courts, playground equipment], usage [day facility, camping facility, both], water accessibility).</li> <li>•Research available funding sources and develop relationship with potential investors.</li> <li>•Tentatively select land parcel for park development.</li> <li>•Obtain financial commitment from the Tuscola County Board of Commissioners for the project.</li> <li>•Negotiate price for land parcel (contingent on receipt of grant funding to assist with park development).</li> <li>•Apply for grant funding to support the project in whole or in part.</li> <li>•Acquire property for park development.</li> </ul>				

**Year  
Five,  
Priority  
Eight**

**7. Develop a river walkway along the Cass River (flows diagonally from Cass City to Vassar) to promote recreational activities such as boating, canoeing, fishing, picnics, and swimming.**

Total project:	Michigan Natural	2012
\$200,000.00	Resources Trust	
	Fund - 75%	
	Grant Tuscola	
	County - 25%	
	Match	

- Plot existing walkways along the Cass River between Cass City and Vassar.
- Develop preliminary scope of the project (starting point, property owners).
- Research available funding resources and develop relationship with potential investors.
- Determine interest in and ability of local township / village to contribute to the walkway's project costs.
- Obtain financial commitment and / or non financial support from the Tuscola County Board of Commissioners for the project.
- Hire an engineering firm to prepare bid specifications.
- Release bid package.
- Host bidders' conference to address project specific questions.
- Apply for grant funding to support the project in whole or in part.
- Review and recommendation of bid proposals by the Tuscola County Parks and Recreation Commission (contingent on receipt of grant funding).
- Acceptance of bid by the Tuscola County Board of Commissioners and / or the local unit of government, as appropriate.

## Section VIII

# Minutes / Resolutions



























## Section IX

# Correspondence



