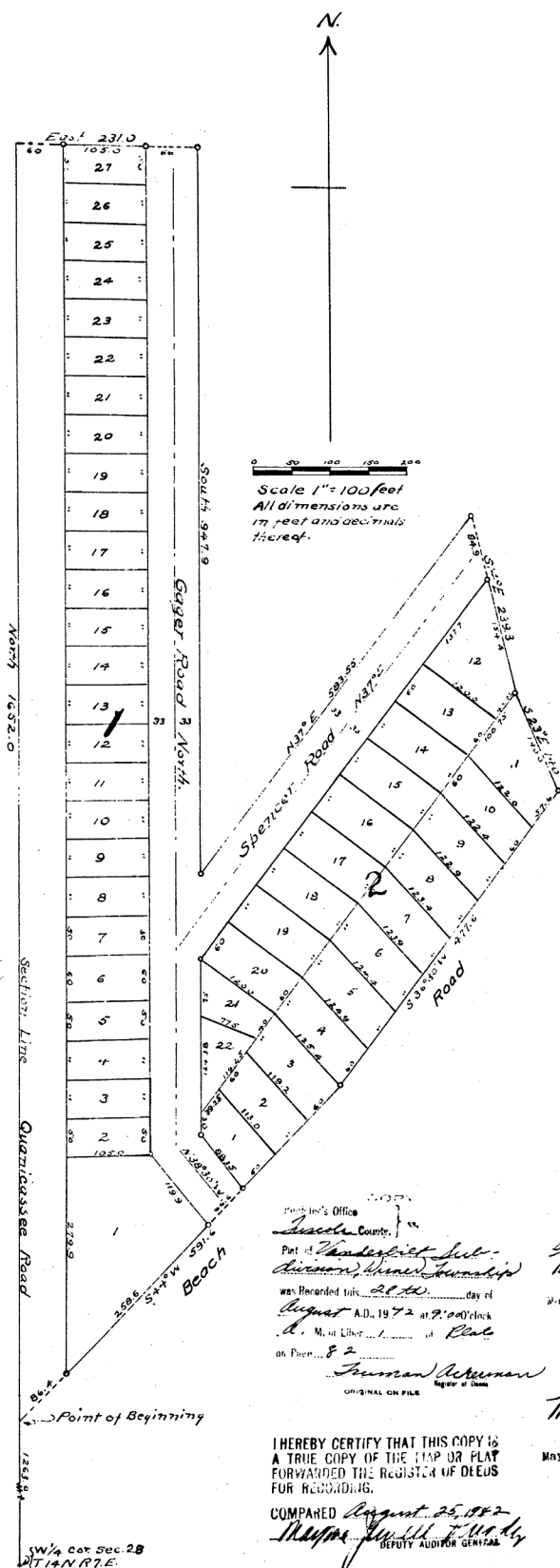


VANDERBILT SUBDIVISION

PART OF LOT 1, SEC. 28 T.14 N.R.7 E.

WISNER TWP., TUSCOLA CO., MICH.



DEDICATION
 KNOW ALL MEN BY THESE PRESENTS That we Frank Vanderbilt
 as proprietor, and
 Amelia Vanderbilt his wife, have caused the
 land embraced in the annexed plat to be surveyed, laid out and platted, to be known as
 "VANDERBILT SUBDIVISION, part of lot 1, section
 28, T.14 N., R. 7 E., Wisner Township, Tuscola
 County, Michigan"
 and that the streets and alleys therein on said plat are hereby dedicated to the use of
 the public.

Signed and Sealed in
 the Presence of:
 Jennie Nelson, Frank Vanderbilt (S)
 Jennie Nelson, Frank Vanderbilt (S)
 Margaret Black, Amelia Vanderbilt (S)
 Margaret Black, Amelia Vanderbilt (S)

ACKNOWLEDGMENT
 STATE OF MICHIGAN
 County of Tuscola

On this 6th day of July 1942
 before me, a Notary Public in and for said county, personally came the above named
 Frank Vanderbilt and
 Amelia Vanderbilt his wife,
 known to me to be the persons who executed the above dedication and acknowledged
 the same to be their free act and deed.

Roscoe J. Black
 Notary Public Tuscola County
 My Commission expires 1-5-45

DESCRIPTION OF LAND PLATTED
 The land embraced in the annexed plat, "VANDERBILT SUBDIVISION
 part of lot 1, section 28, T.14 N., R. 7 E.,
 Wisner Township, Tuscola County, Michigan"

is described as follows: Beginning at a point on the
 section line 1285 feet North of the West one
 quarter corner of section 28, T.14 N., R. 7 E.,
 Thence North 1652 feet, East 231 feet, South
 947.8 feet, N 37° E 535.55 feet, S 14° E 230.3
 feet, S 23° E 140 feet, S 36° 20' W 477.6 feet,
 S 44° W 501.6 feet to beginning.

SURVEYOR'S CERTIFICATE
 I hereby certify that the plat is a true and correct one and that personal
 metal monuments, consisting of brass not less than one half inch in diameter and 4 inches
 in length, or other fasteners of not less than one half inch in diameter, were set at
 other or fasteners with one inch length of iron pipe, 2 inches in diameter, or any
 concrete cylinder of four inches diameter and set in the ground at points marked as
 at points marked as "Q" at the corner of all angles in the boundaries of the
 land platted, at all the intersections of streets, intersections of alleys, or at corners and
 alleys, and at the intersections of streets and alleys with the boundaries of the plat or
 shown on said plat.

Roscoe J. Black
 Registered Professional Engineer
 Roscoe J. Black

APPROVAL BY BOARD OF COUNTY ROAD COMMISSIONERS
 This plat has been examined and was approved on the 9th
 day of July 1942 by the Tuscola
 County Board of Road Commissioners.

A. H. Atkins
 C. H. Case
 C. A. Gibbs
 W. J. Profit

MUNICIPAL APPROVAL
 This plat was approved by the Township Board
 of the Wisner
 at a meeting held July 7, 1942
 W. Russell

APPROVAL BY COUNTY BOARD
 This plat was approved on the 9th
 July 1942.

Truman Ackerman
 George F. Childs
 Arthur M. Willits

COUNTY TREASURER'S CERTIFICATE
 Office of County Treasurer, Tuscola County.
 I hereby certify that there are no tax liens or taxes held by the State on the lands de-
 scribed hereon, and that the same are in full payment by individuals on said lands,
 for the five years preceding the 9th day of
 July 1942 and that the tax for said period of
 five years are all paid, as shown by the records of this office, except
 this certificate does not apply to taxes, if any, now in process of collection by township,
 city or village collecting officers.
 Arthur M. Willits

Notary's Office
 Tuscola County, Mich.
 Part of Vanderbilt Sub-
 division, Wisner Township
 was Recorded this 21st day of
 August A.D. 1942 at 9:00 o'clock
 A. M. Notary
 on Page 82
 Truman Ackerman
 ORIGINAL ON FILE

Examined and Approved
 August 25, 1942
 Mayne Jewell Purdy
 Deputy Auditor General

FILED IN AUDITOR GENERAL'S DEPT.
 September 1, 1942
 Mayne Jewell Purdy
 DEPUTY AUDITOR GENERAL

I HEREBY CERTIFY THAT THIS COPY IS
 A TRUE COPY OF THE MAP OR PLAT
 FORWARDED TO THE REGISTER OF DEEDS
 FOR RECORDING.
 COMPARED August 25, 1942
 Mayne Jewell Purdy
 DEPUTY AUDITOR GENERAL
 Mayne Jewell Purdy

SW 1/4 Cor Sec. 28
 T.14 N. R. 7 E.