



TUSCOLA COUNTY DRAIN COMMISSIONER
Robert J. Mantey
125 W. Lincoln Street, Ste. 100
Caro, Michigan 48723

NOBLE DRAIN

NOTICE OF DAY OF REVIEW OF DRAINAGE DISTRICT BOUNDARIES AND REVIEW OF APPORTIONMENTS

DATE: Tuesday, December 12, 2017

TIME: 9:00 a.m. – 5:00 p.m.

LOCATION: Purdy Building - Tuscola County Drain Commissioner
125 West Lincoln Street, Suite 100
Caro, Michigan 48723

QUESTIONS: (989) 726-0286
Please leave a detailed voicemail. All calls are returned in the order received.

The Day of Review is an opportunity to review the Noble Drain Drainage District boundaries and apportionment of benefit with the Drain Commissioner or a staff member. A map of the proposed Drainage District boundary revisions can be found on the reverse side of this notice and on the Tuscola County website at: www.tuscolacounty.org.

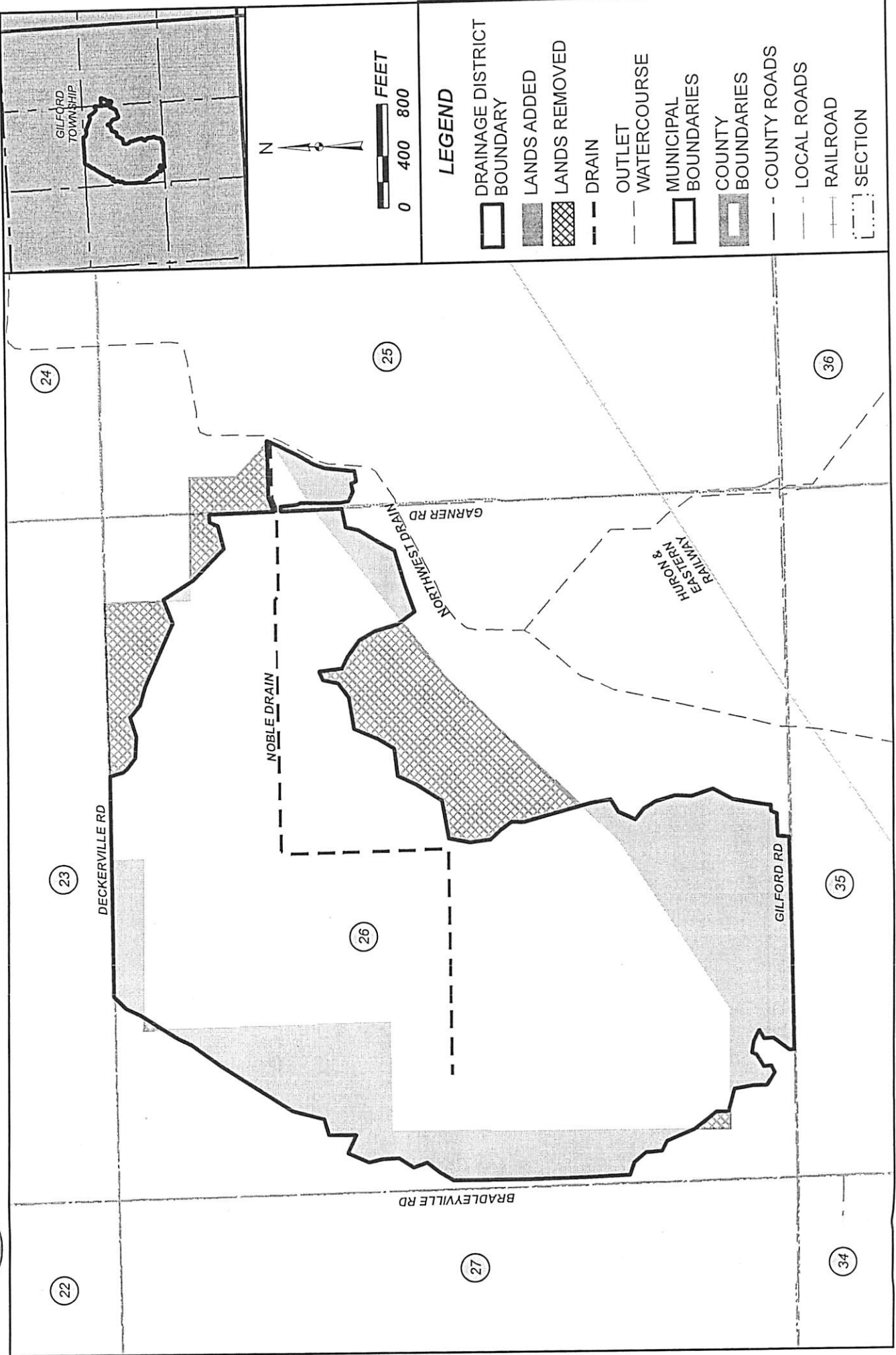
The Drain Commissioner, engineers, and/or other staff members will be available to assist individuals throughout the day, and make revisions where necessary. There is no need to schedule an appointment for a specific time on the Day of Review. Drain assessments are collected in the same manner as property taxes and will appear on your winter tax bill. If drain assessments are being collected for more than one (1) year, you may pay the assessment in full with any interest to date at any time and avoid further interest charges.

Persons with disabilities needing accommodations for effective participation in the Day of Review should contact the Drain Commissioner's Office at the number noted above (voice) or through the Michigan Relay Center at 7-1-1 (TDD) at least 24 hours in advance of the Day of Review to request mobility, visual, hearing or other assistance.

You may appeal the Drain Commissioner's decision to revise the district boundary to the Tuscola County Circuit Court within ten (10) days, and you may also appeal the determination of apportionments to the Tuscola County Probate Court within ten (10) days.



NOBLE DRAIN DRAINAGE DISTRICT
TUSCOLA COUNTY DRAIN COMMISSIONER
ROBERT J. MANTEY



- LEGEND**
- DRAINAGE DISTRICT BOUNDARY
 - LANDS ADDED
 - LANDS REMOVED
 - DRAIN
 - OUTLET
 - WATERCOURSE
 - MUNICIPAL BOUNDARIES
 - COUNTY BOUNDARIES
 - COUNTY ROADS
 - LOCAL ROADS
 - RAILROAD
 - SECTION